



UNDERSTANDING & SUPPORTING YOUR CHILD'S TRANSITION TO SECONDARY SCHOOL

Mrs Lee-Ang Sing Yee
Year Head 1
14 Jan 2022



Differences between Primary & Secondary School

- More/new subjects, more school programmes/activities
- Longer curriculum and after-school hours
- Enhanced integration of ICT in the curriculum
- CCA is compulsory
- Greater peer influence
- Greater independence and expectations of self-discipline and self-responsibility

More/New Subjects in Secondary 1

Examinable

1. English Language
2. Mother Tongue Language
3. Mathematics
4. General Science
5. History (For Express/NA only)
6. Geography (For Express/NA only)
7. English Literature (For Express/NA only)
8. *Design & Technology (D&T)
9. *Food & Consumer Education (FCE)
10. Art (For Express/NA only)
11. Computer Applications (For NT only)

**Will be taken in either Semester 1 or 2*

Non-examinable

1. Music
2. Physical Education (PE)
3. Character and Citizenship Education (CCE)
4. Project Work (PW) - Sem 1 (For Express/NA only)
5. Applied Learning Programme (ALP) - Sem 2
6. Social Studies (For NT only)
7. Art (For NT only)



Subject-Based Banding (For NA/NT course)

Eg. Student A

- Posted to N(A) course
- Scored A* for Math at PSLE

N(A)
English

N(A)
History

Express
Math

N(A)
Science



Other Opportunities to Take Higher-Level Subjects

- Beyond the start of Sec 1, students who do well in school-based examinations may be considered to take higher-level subjects if found suitable to do so by our school.



Full Subject-Based Banding

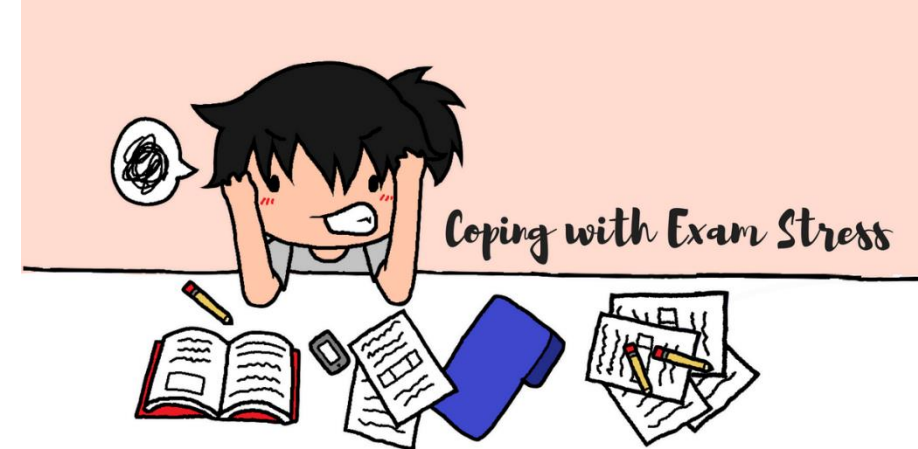
- Different from Full Subject-Based Banding (FSBB), which has been implemented in some Sec schools since 2020 – where SBB is extended beyond PSLE subjects
- From 2023, CVSS will implement FSBB for its Sec 1 cohort.
- Features include:
 - Mixed form classes (E, N(A), N(T))
 - Common Curriculum Subjects in Lower Sec (Art, CCE, D&T, FCE, Music and PE)
 - Opportunity to offer Humanities (Geography, History and Literature in English) at a more demanding level from Sec 2

Blended Learning (BL) and Personalised Digital Learning Programme (PDLP)

- BL and PDLP initiative will equip all secondary students with digital skills and prepare them to better navigate a digitalized world
- All students will own a Personal Learning Device (PLD)
- Letter will be issued via Parents Gateway on 14 Jan on device and funding details
- Complemented with a curriculum that provides a mix of engaging in-school and home-based activities, online and offline
- Home-Based Learning Days scheduled to promote self-directed, collaborative learning



Nurturing life-long learners



No mid-year examination for Sec 1 & 3

- Allow students to adjust to new subjects and higher curricular demands at key transition stages at Sec 1 & 3.

Weighted Assessment (WA) as part of regular learning

- Serves to inform on student learning and provide students and teachers with timely feedback on learning gaps

School-based Assessment (SBA)

**In case you missed it, you should have received the SBA structure on the first day of school. Details include schedule & weighting.*

2. How can I support my child through the transition to Secondary 1?

Supporting your child's transition through
Secondary School

Build a caring home environment to nurture the social and emotional skills of your child using these S.A.F.E. tips.

SUPPORT

- Find out how your child's preferences are changing. Show interest by asking open-ended questions.
- Make a habit of chatting at a fixed time each day.
E.g. At dinner time.

FAMILIARISE


- Find out what secondary school life is like for students these days.
- Excite him/her about new experiences secondary school students can have.
- Encourage him/her to pick up a new hobby or hone skills in outdoor sports.
- Limit his/her time spent on digital devices.

AFFIRM

- Remember your child's strengths. Build his/her self-esteem in those areas.
E.g. "You have the unique ability to get along well with people."
- Praise and affirm efforts in front of relatives and friends.
E.g. "She is very helpful towards her grandparents."

EMPATHISE

- Acknowledge your child's varying emotions.
E.g. "I understand you feel anxious about starting school without any of your old friends."
- Encourage your child to share thoughts and feelings about the new school.
- Prioritise sufficient sleep.



Scan the QR code to read up on S.A.F.E. tips



Ways to partner school in supporting your child:

1. Check Parents Gateway regularly for updates

2. Communicate with your child's teachers

- Email them directly or contact them via General Office Tel: **6881 5047**
- Attend Meet-the-Form Teacher session: **26/27 May 2022** (Last week of Term 2)

3. Work with the teachers to help your child learn and grow into adolescence

4. Join the Parent Support Group (PSG)

- Network with other parents, attend parenting workshops and activities



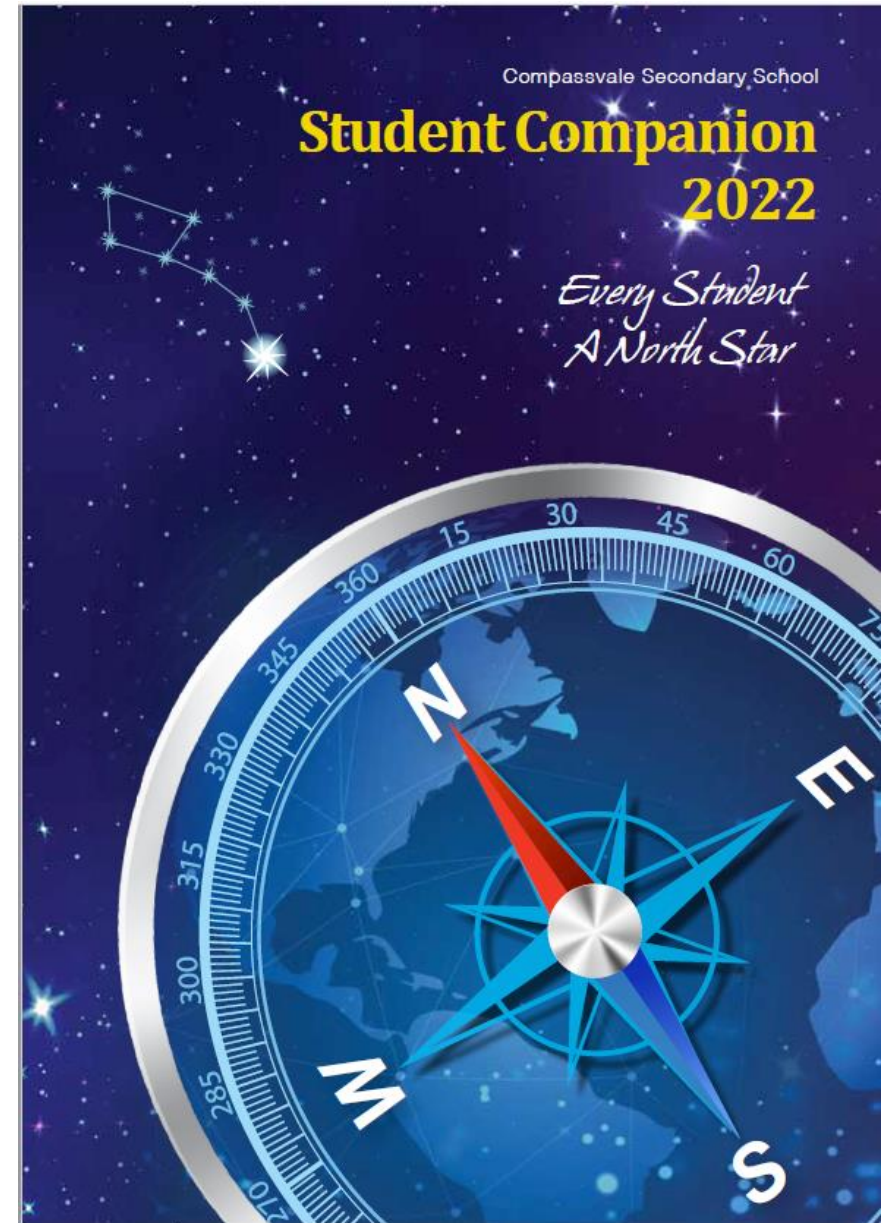
Useful Sources of information:

1. School website

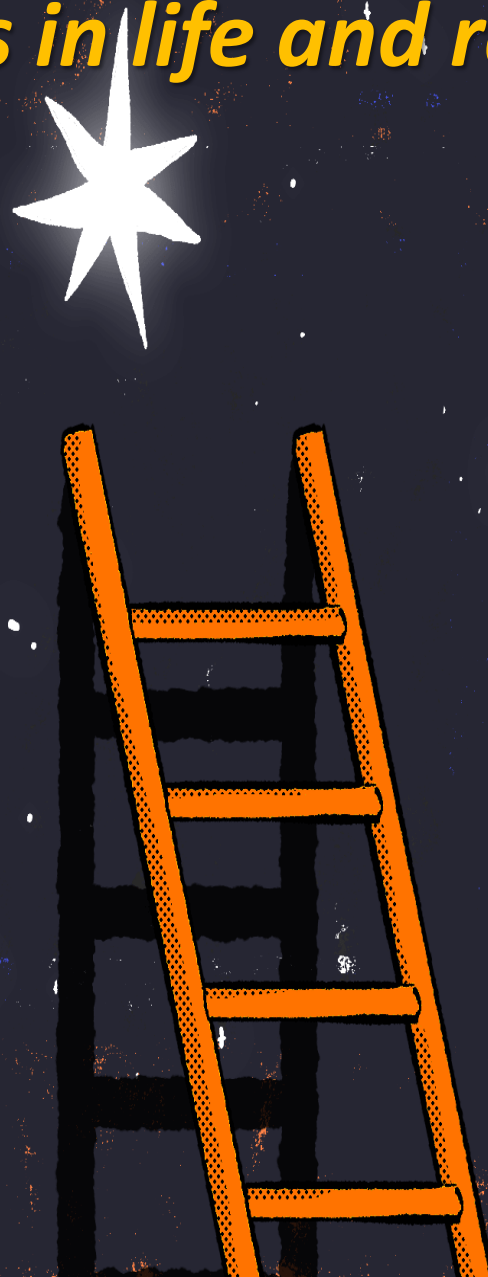
<https://compassvalesec.moe.edu.sg>

2. Student Companion

3. Principal's Termly Letter to Parents



Concluding thought: Together, we can help *every child* find their compass in life and realise the *STAR* within.



Thank you!