

*Once a North Star, always a North Star.*

Join us by registering via the link below:  
<https://tinyurl.com/registercvssalumni/>



JOIN TODAY!



@CVSSALUMNI



# WELCOME BACK!

Briefing Slides for Release of 2023 GCE O-Level Results

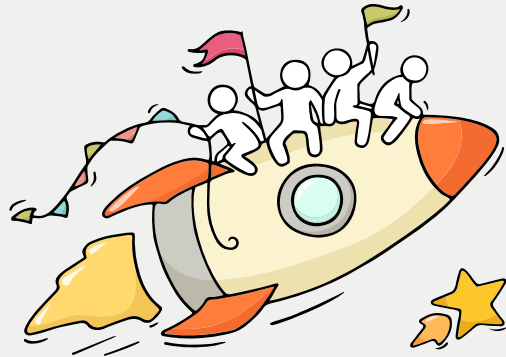


# JOINT ADMISSION EXERCISE

Education & Career Guidance (ECG) Briefing

DEAR STUDENTS,

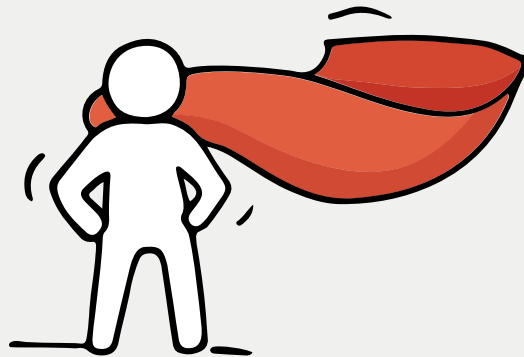
You have worked hard to reach this stage. Let's celebrate our efforts!



*Finally, we are  
about to receive  
our results!*



Remember that while **everyone's educational journey is different,**  
**we can each have a fulfilling outcome!**



# Thinking about Your Next Step?

Consider these questions!

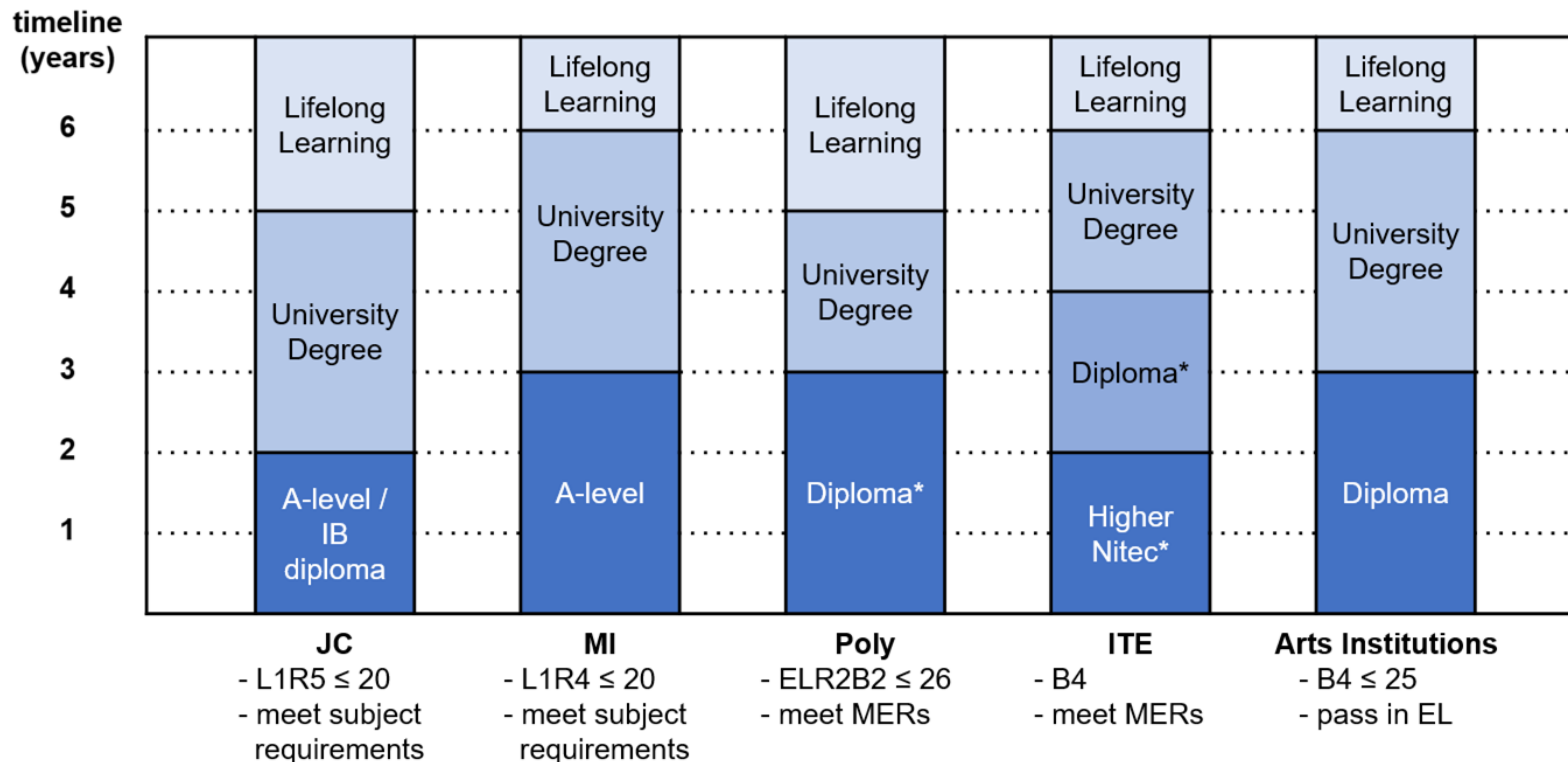
Where do I want to go?

Who am I?



How Do  
I Get There?

# POST-SECONDARY EDUCATION PATHWAYS AFTER 'O' LEVEL



\*progression is based on merit and good performance in selected courses

MER: course-specific Minimum Entry Requirements

# SOME TIPS FOR YOUR CONSIDERATION

## JC/MI

- Subject combination
  - Assumed knowledge
  - Pre-requisite
- Course cut-off
- Go for the open house
- Refer to Indicative Grade Profile for University admission

## Poly

- What the course is about
- What modules will you be studying
- Course cut-off & minimum entry requirements (MERs)
- What progression opportunities/Career prospects there are



# CUT-OFF RANGES BY JC/IB STREAMS (JAE 2023)

JC Name	A-Level				International Baccalaureate	
	Arts		Science		Course Code	Net L1R5 Range for Previous (2023) JAE
	Course Code	Net L1R5 Range for Previous (2023) JAE	Course Code	Net L1R5 Range for Previous (2023) JAE		
Anderson Serangoon Junior College	39A	6 to 11	39S	4 to 10	-	-
Anglo-Chinese Junior College	22A	4 to 9	22S	2 to 8	-	-
Anglo-Chinese School (Independent)	-	-	-	-	51I	2 to 5
Catholic Junior College	23A	4 to 14	23S	3 to 13	-	-
Dunman High School	44A	4 to 9	44S	2 to 8	-	-
Eunoia Junior College	38A	2 to 8	38S	2 to 6	-	-
Hwa Chong Institution	24A	2 to 5	24S	2 to 4	-	-
Jurong Pioneer Junior College	40A	5 to 17	40S	5 to 14	-	-
Nanyang Junior College	26A	4 to 6	26S	2 to 5	-	-
National Junior College	27A	5 to 8	27S	2 to 7	-	-
Raffles Institution	28A	2 to 5	28S	2 to 4	-	-
River Valley High School	45A	6 to 9	45S	4 to 8	-	-
St. Andrew's Junior College	30A	3 to 10	30S	3 to 9	-	-
St. Joseph's Institution	-	-	-	-	52I	2 to 7
Tampines Meridian Junior College	41A	6 to 13	41S	4 to 13	-	-
Temasek Junior College	32A	7 to 9	32S	3 to 8	-	-
Victoria Junior College	33A	2 to 8	33S	2 to 7	-	-
Yishun Innova Junior College	42A	11 to 19	42S	6 to 20	-	-

Source: <https://www.moe.gov.sg/-/media/files/post-secondary/2024-jae/2024-jae-courses.pdf>

# CUT-OFF RANGES BY POLY COURSE CLUSTERS (JAE 2023)

	TP	SP	RP	NYP	NP
Applied Sciences	3-14	3-14	7-19	4-12	3-16
Business & Mgmt.	3-19	3-13	8-26	5-17	3-15
Engineering	4-21	3-19	12-26	6-24	4-24
Humanities	3-19	-	-	4-13	5-23
Info. & Digital Tech.	4-16	3-15	10-26	4-15	3-14
Media & Design	3-16	3-16	9-20	4-17	3-15

*Source: various Polytechnic websites*

# HOW CAN I MAXIMISE MY 12 CHOICES IN THE JOINT ADMISSIONS EXERCISE (JAE)?

**First 3 to 4 choices:** Consider courses that most align with your Values, Interests, Personality and Skills (V.I.P.S) and strengths.

**Next 3 to 4 choices:** Choose what you are interested in and stand a good chance of getting into. Consider the last aggregate scores of the courses (where your net score is within the range of the last year's aggregate score) in CourseFinder ([go.gov.sg/cf](https://go.gov.sg/cf)) or SchoolFinder ([go.gov.sg/sf-jcml](https://go.gov.sg/sf-jcml)).

**Last few choices:** Include alternative courses and institutions where the last aggregate scores are higher than yours. With this, your chances of securing a place will be higher.

Consider all choices carefully and **fill in all 12 choices** even if you are confident of getting into your desired course.



Realising the Star Within

# HOW CAN I MAXIMISE MY 12 CHOICES IN THE JOINT ADMISSIONS EXERCISE (JAE)?

## Student X

- Interested in Science
- Keen to pursue a career in Biomedical Sciences
- Aims for JC pathway
- CCA attainment: Excellent (i.e. 2 bonus points)
- Form A

L1R5	ELR2B2-A	ELR2B2-B	ELR2B2-C	ELR2B2-D
11	10	8	8	8

**First 3 to 4 choices:** Consider the courses that most align with your Values, Interests, Personality & Skills (V.I.P.S) and strengths.

Course choice/code	2023 net indicative grade (MOE course finder)
EJC Sci/38S	2 - 6
NJC Sci/27S	2 - 7
River valley High Sci/45S	4 - 8

**Next 3 to 4 choices:** Choose what you are interested in and stand a good chance

Course choice/code	2023 net indicative grade (MOE course finder)
SAJC Sci/30S	3 - 9
CJC Sci/23S	3 - 13
Biomedical science SP/S98	3 - 7

**Last few choices:** Include alternative courses and institutions where the last aggregate scores are higher than yours.

Course choice/code	2023 net indicative grade (MOE course finder)
Biomedical science RP/R14	7 - 12
YIJC Sci/42S	6 - 20

# HOW POSTING WORKS?

To apply for a course, you must first **meet the admission criteria** of the course.

After eligibility is confirmed, these factors will be considered.

- Your net aggregate score, that is gross aggregate score minus bonus points.
- Your choice of courses.
- Vacancies available in the courses.

# RESOURCES TO HELP YOU MAKE INFORMED DECISIONS

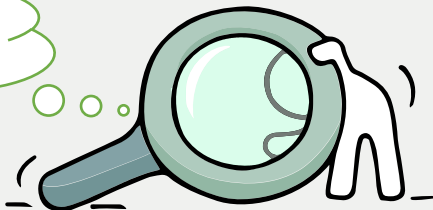


## MySkillsFuture Student Portal

A one-stop portal that empowers you to embark on a journey of self-discovery and make informed education and career choices.

Use the information and tools to explore various education and career pathways and take charge of your future.

*Where can we find more information?*



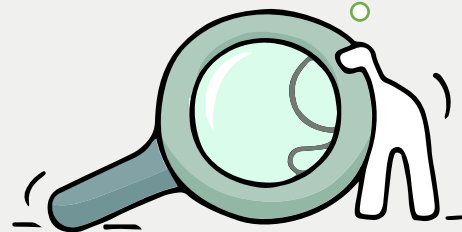
<https://go.gov.sg/mySFsec>



# RESOURCES TO HELP YOU MAKE INFORMED DECISIONS



*Where can we find more information?*



<https://go.gov.sg/whats-next-olevel>

# RESOURCES TO HELP YOU MAKE INFORMED DECISIONS

## Information on Post-Secondary Education

Learn more about the  
admissions exercises and  
programmes



Learn more about the  
post-secondary education  
institutions



<https://moe.gov.sg/post-secondary/admissions> <https://moe.gov.sg/post-secondary/overview>



# RESOURCES TO HELP YOU MAKE INFORMED DECISIONS

Explore different jobs and industries with On My Way (OMW).  
Find out if your career goal and educational pathway match your interests, values  
and ambitions. <https://www.nyc.gov.sg/omw/home>



**KNOW IT ALL**  
provides consolidated  
information about different  
jobs and industries - key  
responsibilities, skills, career  
paths and more!



**DAY IN THE LIFE**  
takes you into the lives of  
different professionals and give  
you a glimpse of their jobs and  
what it entails through the  
medium of videos.



**TASTER PROGRAMMES**  
are micro-experiences of  
different job roles that allow you  
to get a taste of working life and  
help you decide what to study to  
achieve your career aspirations!



# CONCERNED ABOUT YOUR NEXT STEP?

## Stop

- Calm yourself down. Take a few deep breaths.

When you receive your results, you may experience a range of emotions.

Managing these emotions well will allow you to stay calm and make rational decisions.

## Think

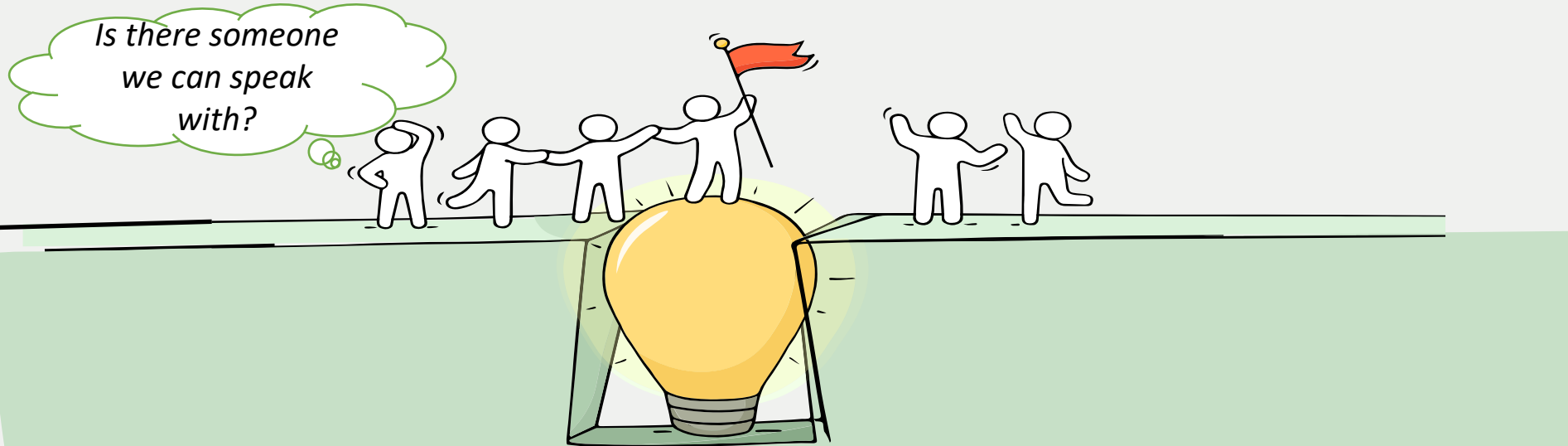
- Think through the different options that are available for you. Keep things in perspective.
- Remember that the O-Level is one part of your life journey and not the destination.

## Do

- Approach a trusted adult and seek his/her help. Have a conversation with this person about what would be best for you.
- Make a decision and take action based on your options.


# REACHING OUT FOR HELP IS A SIGN OF STRENGTH, NOT WEAKNESS.

If you have any questions about your options or are not coping well, do reach out to someone you trust and speak with them. It could be a parent/guardian, teacher, ECG Counsellor, School Counsellor or a friend whom you can talk to.



# SUPPORT IS READILY AVAILABLE FOR YOU.

## Reach out to an ECG Counsellor!



Who can we go  
to for ECG  
advice?

Make an appointment to speak with  
your ECG Counsellor in school.

**OR**

Make an ECG counselling appointment  
via the  
ECG Centre @ MOE (Grange Road) at  
<https://go.gov.sg/moe-ecg-centre>



# Education and Career Guidance

Your education and career journey can be meaningful

Having Decision making difficulties?

- Post secondary pathways
- Subject combinations
- Career aspirations
- DSA/EAE choices



Feeling anxious/uncertain about the future?

- Lack of self understanding
- Personal challenges
- Loss of direction
- Lack motivation



Ms Adeline is here to



Hello students, I am an experienced educator with a passion to help youths see their potential. I believe in empowerment of skills and guiding youths to make informed choices confidently. Book an ECG chat today, let's walk the journey together.



**Every Monday and Thursday**

**Email: [adeline\\_teo\\_li\\_ching@schools.gov.sg](mailto:adeline_teo_li_ching@schools.gov.sg)**

Discover yourself. Explore opportunities. Have a plan



# ECG Microsite (accessible through school website)

## 2023 O Level Graduates

Ministry of Education  
SINGAPORE

## 2024 Joint Admissions Exercise

Updated as of Aug 2023

Visit <https://www.moe.gov.sg/jae> to find out more

GCE O-Level certificate holders who are eligible to participate in the Joint Admissions Exercise (JAE) can apply for admissions into junior colleges (JCs), Millennia Institute (MI), polytechnics, and Institute of Technical Education (ITE).

### Key dates and events

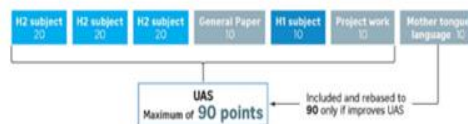
#### 1. Before Application



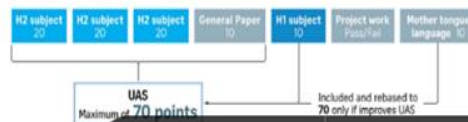
### Updates in Education landscape

#### THE STRAITS TIMES

##### CURRENT UAS COMPUTATION



##### UAS COMPUTATION FROM 2026

Junior college and Millennia  
Institute [Read article](#)

- Change in calculation of University Admission Scores (AY2026)
- Gradual removal of MYE
- Project work graded pass/fail

Source: MINISTRY OF  
EDUCATION  
STRAITS TIMES GRAPHICS

Page 1 / 12



**Keep a lookout for  
some of these signs  
in your peers or  
yourself.**

*How can we  
support one  
another?*



**D**

Deliberately avoiding others

**I**

Increased irritability, restlessness, agitation, stress and anxiety

**S**

Sending or posting moody messages on social media

**T**

Talking about death or dying

**R**

Reacting differently or gradually losing interest in things they used to like

**E**

Eating more than usual or having a much reduced appetite

**S**

Sleep pattern changes with difficulty falling asleep or oversleeping

**S**

Slowing down of energy levels

If you notice any of these signs in yourself or your friends,  
**have a chat with your school counsellor or teacher**  
Or contact SOS 24-hour hotline at **1-767** or **1800-221-4444**





# Supporting Your Friend

We may each experience different emotions upon receiving the results. You can share your friends' joy by congratulating them or give words of encouragement to friends who may be disappointed with their results.



Keep a lookout for your friends in distress. You can support them in the following ways:





There are other hotlines and chats available if you are more comfortable seeking help using these platforms. Scan the QR code below for a helpful resource.



**SOS** provides round-the-clock emotional support for those in distress, thinking of suicide or affected by suicide.

Call: **1767**  
(24-hour helpline)

Whatsapp: **9151 1767**  
(24-hour Care Text)

**Community Health Assessment Team (CHAT)** provides personalised and confidential mental health checks and consultation for youths. To speak with a youth support worker, you can:

Visit: **CHAT Hub at \*SCAPE, #05-05**  
Call: **6493 6500/ 6501**  
Email: **CHAT@mentalhealth.sg**

**mindline.sg** is an online platform that provides tools, tips and resources to help you manage your health and well-being. Find out more at:  
**[www.mindline.sg](http://www.mindline.sg)**



**TOUCHline** is a helpline to provide youths with emotional support and practical advice.

Call: **1800-377 2252**  
Monday- Friday (Excluding Public Holidays):  
9am – 6pm

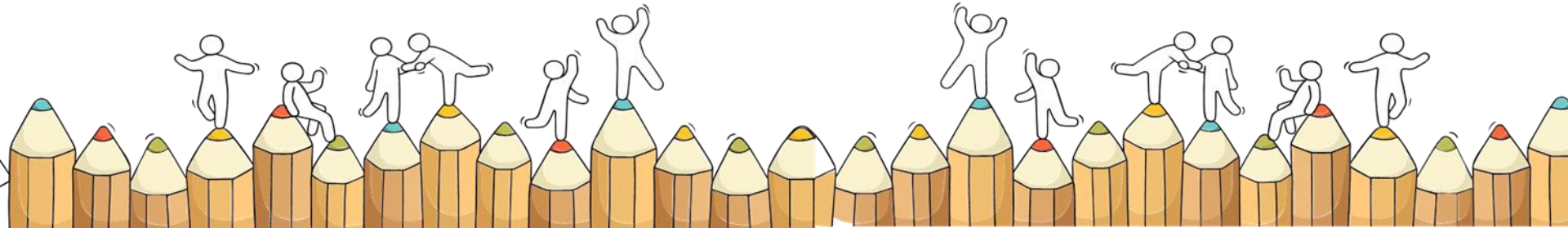
**Carey** is an online platform by Care Corner that provides free mental health check-ins with mental health professionals. Find out more at:  
**<https://carey.carecorner.org.sg/>**

**eC2** is an e-Counselling Centre where you can talk to a trained counsellor about the issues you are facing, right where you are.

Chat with a counsellor at:  
**[www.ec2.sg](http://www.ec2.sg)**  
Monday – Friday (Excluding Public Holidays):  
10am – 12pm & 2pm – 5pm

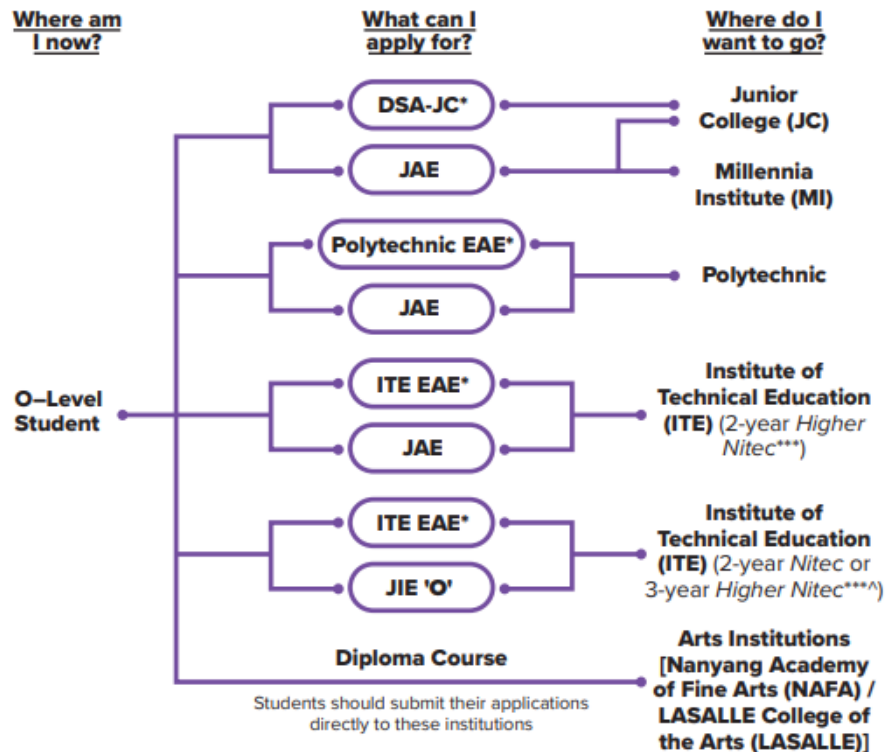
# Admissions Exercises

Things to note





## Admissions Exercises for O-Level Students



<https://www.moe.gov.sg/post-secondary/admissions>

\*Students can apply through these admissions exercises before their O-Level examinations.

\*\*\*Selected *Nitec* and *Higher Nitec* courses are available in traineeship mode. For more information on applying to these courses, you can visit <https://ite.edu.sg/admissions/traineeship>.

^For the list of 3-year Higher Nitec courses, please visit <https://www.ite.edu.sg/courses/full-time-courses/nitec-and-3-year-higher-nitec>.

# Admissions Exercises Application Timeline



**(O-Level Exams)**

**Oct/ Nov**

**LASALLE\***

**NAFA\***

**(After release of O-Level Results)**

**Jan**

**JAE**

**JIE 'O'**

\*Application to LASALLE's and NAFA's diploma programmes starts from October.

# Details of Admissions Exercises



## **JAE – Joint Admissions Exercise**

JAE enables GCE O-Level holders to apply for admissions to courses offered by JCs, MI, polytechnics and ITE 2-year *Higher Nitec*.



[go.gov.sg/applyjae](https://go.gov.sg/applyjae)



## **JIE 'O' – Joint Intake Exercise 'O'**

The JIE 'O' is conducted to enable GCE O-Level holders to apply for the 2-year *Nitec* or 3-year *Higher Nitec* courses conducted by ITE.



[go.gov.sg/applyjie](https://go.gov.sg/applyjie)

# Details of Admissions Exercises



## **Arts Institutions – NAFA/ LASALLE**

GCE O-Level holders with the aptitude and interest to pursue the creative arts at the tertiary level may apply for diploma programmes at the Arts Institutions (AIs). Each AI runs its own admissions exercise, and interested students should apply directly to the institution.

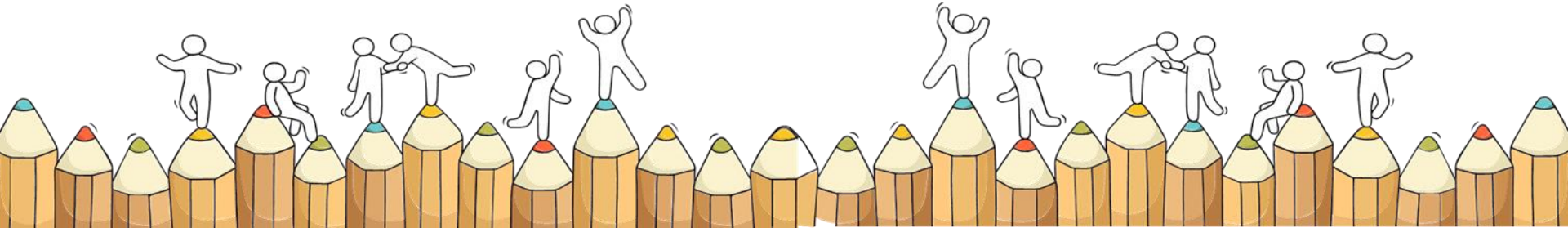


[go.gov.sg/nafa-applynow](https://go.gov.sg/nafa-applynow)



[go.gov.sg/lasalle-applynow](https://go.gov.sg/lasalle-applynow)

# For Students Planning for Private Education



# The 3Rs when deciding on Private Education

## Reasons

- Why are you furthering your studies?
- Is this for better job prospects?

## Readiness

- How ready are you to further your studies?
- Can you cope with the academic rigour and assignment deadlines?
- Can you fund your studies?

## Risks

- Do you know the possible drawbacks?
- Your expected returns may not exceed the investments you put into your private education.
- Private schools may make exaggerated claims.
- Private schools may close due to various reasons.
- You may not get a full refund if you withdraw from your course.

<https://go.gov.sg/3rs>





# 8 Things You Should Know Before You Enrol in A Private School

## School Registration



Ensure the school is registered with CPE. Review the school's registration period, expiry date and its overall registration track record.

## Partner Institution



Research on the partner institution conferring the diploma or degree, and whether the qualification is recognised by the industry.

## EduTrust Certification Scheme

Is the school EduTrust-certified\*? Under the scheme, private schools are assessed for their performance in areas such as school management and provision of student support services.



*\*Schools are required to obtain EduTrust certification in order to offer external degree programmes*

## School Premises

Head down to the campus ground to check the facilities and support services. Observe the study environment too.



## Fee Protection



Ask if there is any course fee protection so that you will be able to recover unconsumed course fees should the school close down.

## Beyond Course fees



Find out about the course syllabus and materials, graduation rates and employment prospects. Approach the alumni to find out what they think of the school.

## Teachers

Check if the teachers are qualified to teach the course.



## Internship

If industry attachment is included, find out which organisation you will be attached to, the period of attachment and the alternative arrangement should the attachment become unavailable. Verify the information with the organisation as well.



# YOU WILL BE COLLECTING 2 DOCUMENTS TODAY

1. Results Slip
2. O level Certificate

## Note:

You will receive a digital copy of your **Form A** via your registered email address from 2.00pm today.

Students eligible for JAE may also download a copy of Form A from the JAE-Internet System (JAE-IS) during the application period.

# Form A

## JC/MI:

You are eligible for all JC/MI courses.

- \*Eligibility does not guarantee placement.
- \*Admission is based on merit, choices and available vacancies.
- \* Find out more on these courses using [CourseFinder](#)

## Polytechnic/ITE:

C33 C34 C35 C36 C38 C41 C42 C43 C45 C46 C47 C49 C50 C51 C52 C54 C59 C60 C62  
C63 C64 C65 C66 C67 C69 C70 C71 C72 C73 C75 C80 C81 C83 C85 C87 C89 C93 C94  
C96 C97 C98 N11 N12 N13 N40 N41 N42 N43 N44 N45 N48 N50 N51 N53 N54 N55 N56  
N57 N59 N60 N65 N67 N69 N71 N72 N73 N74 N81 N82 N83 N85 N91 N93 N94 N96 N97  
N98 R11 R12 R13 R14 R16 R17 R18 R19 R21 R22 R24 R25 R26 R28 R29 R32 R33 R34  
R35 R36 R37 R39 R40 R41 R42 R43 R45 R46 R47 R48 R49 R50 R52 R53 R54 R55 R56  
R57 R58 R59 R60 S30 S31 S32 S35 S38 S39 S40 S41 S42 S43 S47 S48 S50 S53 S54  
S56 S63 S64 S66 S67 S68 S69 S70 S71 S73 S74 S75 S76 S86 S88 S89 S90 S91 S93  
S94 S95 S97 S98 S99 T01 T02 T04 T07 T08 T09 T10 T13 T17 T18 T20 T22 T23 T25  
T26 T28 T29 T30 T33 T35 T38 T40 T43 T45 T48 T50 T51 T52 T53 T56 T58 T59 T60  
T62 T63 T64 T65 T66 T67 T68 V10 V11 V12 V13 V14 V15 V18 V19 V21 V26 V27 V28  
V29 V30 V35 V39 V40 V41 V42 V44 V45 V47 V49 V52 V54 V55 V56 V60 V61 V62 V63  
V64 V65 V66 V67 V68 V69 V70 V71 V72 V73 V74 V75 V77 V78 V80 V81 V82 V84 V85  
V86 V87 V88 V89 V90 V91 V92 V93 V94 V95 V96 V97 V98 V99



Ministry of Education  
SINGAPORE

## 20XX Joint Admissions Exercise

Form A

Name : TEST NAME 111 Address : 111 BUKIT BATOK EAST AVENUE 1 #11 -11 SINGAPORE 111111 School Code : 1111		000684-3005 Centre Index No. : 222222217
--	--	---

No JAE PIN will be issued. To use Singpass to log in to JAE-IS.

Subject and grade based on examination results

Aggregate types and scores

Please apply your course choices by DD/MM/YYYY, 04:00 PM.

### Your 20XX GCE O-Level Examination results:

ENGLISH LANGUAGE = A1, HIGHER CHINESE = C5, CHINESE = B3, MATHEMATICS = A2, ADDITIONAL MATHEMATICS = A1, PHYSICS = B3, CHEMISTRY = B4, HUMANITIES (SOCIAL STUDIES, HISTORY) = A1, LITERATURE IN ENGLISH = B3  
CCA = EXCELLENT

### Your aggregate scores:

JC	MI	Polytechnic				ITE		
L1R5	L1R4	ELR2B2-A	ELR2B2-B	ELR2B2-C	ELR2B2-D	ELB4-A	ELR1B3-B	ELR2B2-C
11	8	8	8	8	8	8	8	8

Gross scores, before deduction of bonus points.

### Your eligible courses:

- You meet the entry requirements for the below courses and are eligible to apply. However, a place in the course is not guaranteed as admission is based on merit, your choices and available vacancies.
- Course codes and descriptions can be found in [www.moe.gov.sg/jaecourses](http://www.moe.gov.sg/jaecourses).



# STAYING RELEVANT: HOW DO I GET THERE?

## Joint Admissions Exercise (JAE)

On the day of the release of the GCE O-Level results, if you are eligible, you will receive:

1. GCE O-Level Certificate from school
2. Form A through email – contains aggregates scores for different institution types and the list of courses eligible for

**Note: JAE Booklet (containing information on all the JCs/MI, polytechnics & ITE) will be discontinued from 2023.**

To access JAE information, visit [Joint Admissions Exercise \(JAE\)](#)

Learn more about post-secondary institutions and courses:

- [CourseFinder](#)
- [SchoolFinder](#)

# JOINT ADMISSION EXERCISE

## Applications Briefing

Applying to	How?	Timeline	What to Expect
JC/MI/Poly/ITE	<p>Submit application online through the JAE website at <a href="http://www.moe.gov.sg/jae">www.moe.gov.sg/jae</a>.</p> <p>The JAE-Internet System can be accessed using Singpass.</p>	<b>4.00 pm, 11 Jan 2024 to 4.00 pm, 16 Jan 2024</b>	<p>Posting results will be released <b>on Thu, 1 Feb 2024</b>, via (a) SMS to the Singapore mobile phone number provided during application (b) JAE-IS, accessible through the JAE website.</p> <p>Students posted to JCs and MI are to report to their posted institutions on <b>Fri, 2 Feb 2024</b>.</p> <p>Students posted to polytechnics or ITE will receive an email or package via mail on the enrolment details by <b>end-February 2024</b>.</p>
PFP (for 2023 4NA students)	<p>Submit application online through the PFP website at <a href="https://pfp.polytechnic.edu.sg/PFP/index.html">https://pfp.polytechnic.edu.sg/PFP/index.html</a>.</p>	<b>2.00 pm, 11 Jan 2024 to 4.00 pm, 16 Jan 2024</b>	<p>Posting results will be released at <b>2.00pm on Tue, 23 Jan 2024</b> through the PFP website.</p> <p>Students to indicate whether to accept, reject, or appeal for a change of course by <b>4.00pm on Fri, 26 Jan 2024</b>.</p>
DPP (for 2023 4NA students)	<p>Submit application online through the DPP portal at <a href="http://www.ite.edu.sg/apply-for-ite-courses">www.ite.edu.sg/apply-for-ite-courses</a>.</p>	<b>12.00 am, 11 Jan 2024 to 11.59 pm, 16 Jan 2024</b>	<p>Posting results will be released at <b>9.00 am on Thu, 18 Jan 2024</b> through the DPP application portal.</p> <p>Students to indicate whether to accept or reject the DPP offer by <b>11.59 pm on Mon, 22 Jan 2024</b>.</p>

## RESOURCES

Applicants can find more information on the following MOE websites:

- JAE website for more details on the JAE ([www.moe.gov.sg/jae](http://www.moe.gov.sg/jae))
- SchoolFinder for details of the offerings by and previous entry score ranges for JCs and MI ([www.moe.gov.sg/schoolfinder](http://www.moe.gov.sg/schoolfinder))
- CourseFinder for courses offered by the polytechnics and ITE, based on aggregate type and area of interest ([www.moe.gov.sg/coursefinder](http://www.moe.gov.sg/coursefinder))