

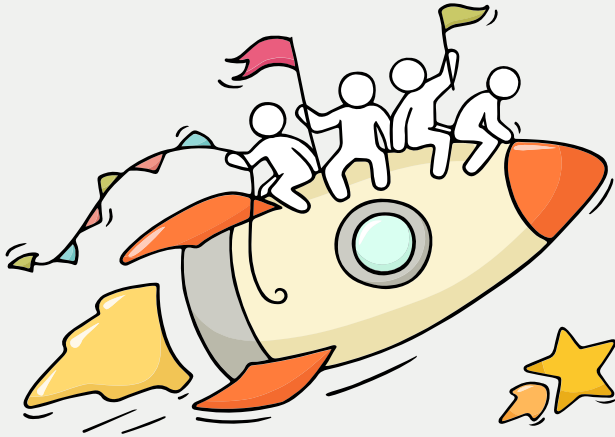
Welcome Back!

Briefing Slides for Release of 2023 N-Level Results



Dear North Stars,

You have worked hard to reach this stage. Let's celebrate your efforts!



*Finally, we are going
to get our results!*



Remember that while **everyone's educational journey is different,**
we can each have a fulfilling outcome!



CONCERNED ABOUT YOUR NEXT STEPS?

Stop

- Calm yourself down. Take a few deep breaths.

Think

- Think through the different options that are available for you. Keep things in perspective.
- Remember that the N-Level is one part of your life journey and not the destination.

Do

- Approach a trusted adult and seek his/her help. Have a conversation with this person about what would be best for you.
- Make a decision and take action based on your options.

When you receive your results, you may experience a range of emotions.

Managing these emotions well will allow you to stay calm and make rational decisions.

Education and Career Guidance

Your education and career journey can be meaningful

Having Decision making difficulties?

- Post secondary pathways
- Subject combinations
- Career aspirations
- DSA/EAE choices



Feeling anxious/uncertain about the future?

- Lack of self understanding
- Personal challenges
- Loss of direction
- Lack motivation



Ms Adeline is here to



Hello students, I am an experienced educator with a passion to help youths see their potential. I believe in empowerment of skills and guiding youths to make informed choices confidently. Book an ECG chat today, let's walk the journey together.

N level support for CVSS
– Book through ECG microsite

(1) Face to Face ECG Session
on Tue 19 Dec and Thur 21 Dec

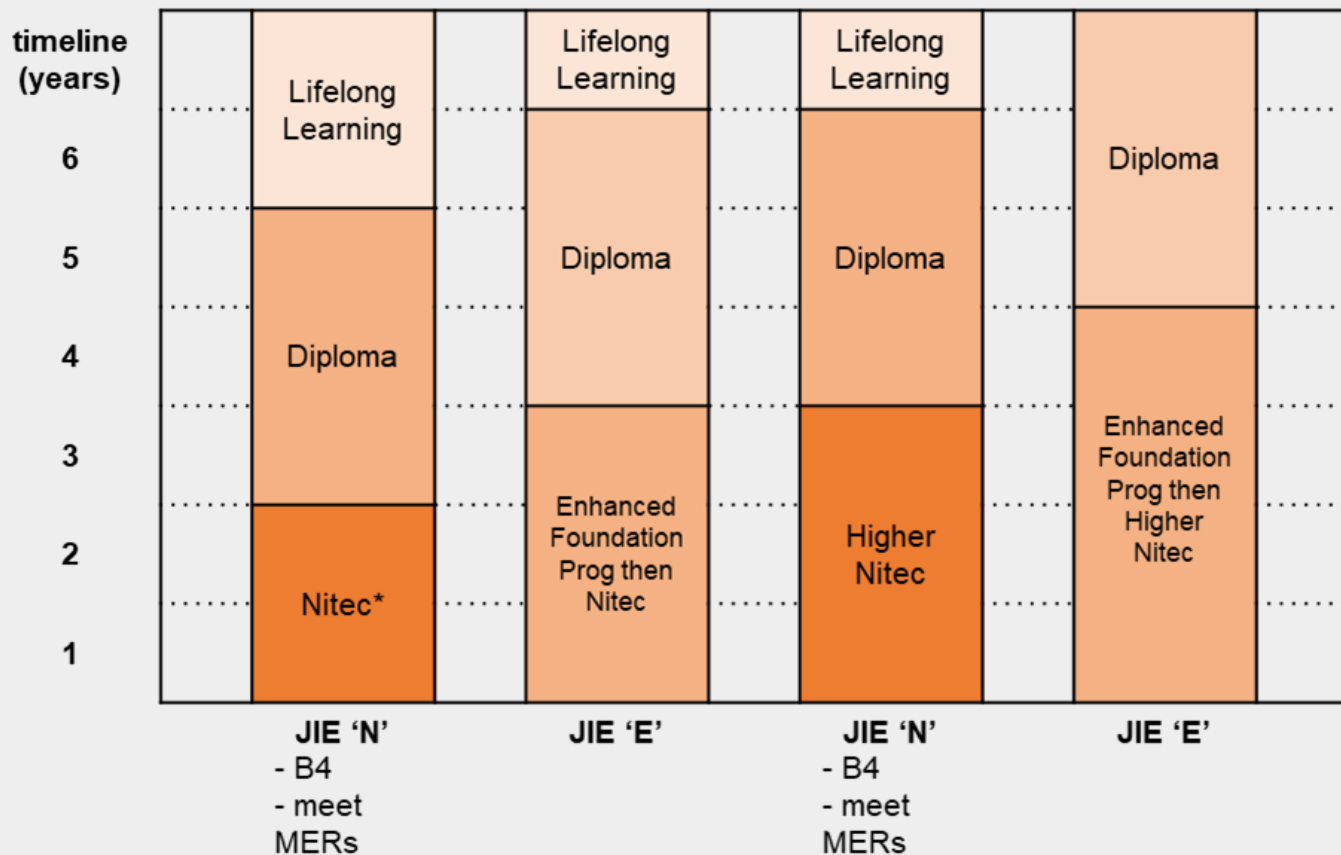
(2) Zoom ECG Session
from Tue 19 Dec to Thur 21 Dec

Email: adeline_teo_li_ching@schools.gov.sg



Discover yourself. Explore opportunities. Have a plan

Post-Secondary Education Pathways for N-level students [N(T) course]



*progression is based on merit and good performance in selected courses
 MER: course-specific Minimum Entry Requirements

POST-SECONDARY EDUCATION PATHWAYS FOR N-LEVEL STUDENTS [N(A) COURSE]

1. Eligible for DPP & PFP*
(ELMAB3 \leq 12 excluding CCA bonus points **and** meet Minimum Entry Requirements)
2. Eligible for DPP (Higher Nitec)
(ELMAB3 \leq 19 excluding CCA bonus points **and** meet Minimum Entry Requirements)
3. Eligible for Sec 5 (ELMAB3 \leq 19)
Take GCE 'O' Levels in 2024
4. Eligible for Nitec
(Meet Minimum Entry Requirements)

**Eligibility for PFP may change after O level results release*

**PFP applicants are required to return to CVSS for lesson til end-Jan*



PFP 1 + 3yr diploma

1

ELMAB3 before CCA bonus ≤ 12

2

Course Specific Subject Entry Requirements

Group 1 [Science/Engineering/ICT/Design]

Subject	Min Grade
English	3
Math/A Math	3
1 of the following - D&T - NFS - Combined Science	3
2 other subjects	4

Group 2 [Business/Media/Humanities]

Subject	Min Grade
English	2
Math/A Math	3
1 of the following - Art - Combined Humanities	3
2 other subjects	4

- Refer to PFP portal (<https://pfp.polytechnic.edu.sg/PFP/index.html>) for expected course entry points
- Eligible students would receive application form in Jan on O level result day. Students can pick up to 5 course options.

**DPP****1****ELMAB3 before CCA bonus ≤ 19** **2****Course Specific Subject Entry Requirements****[Science/ICT]**

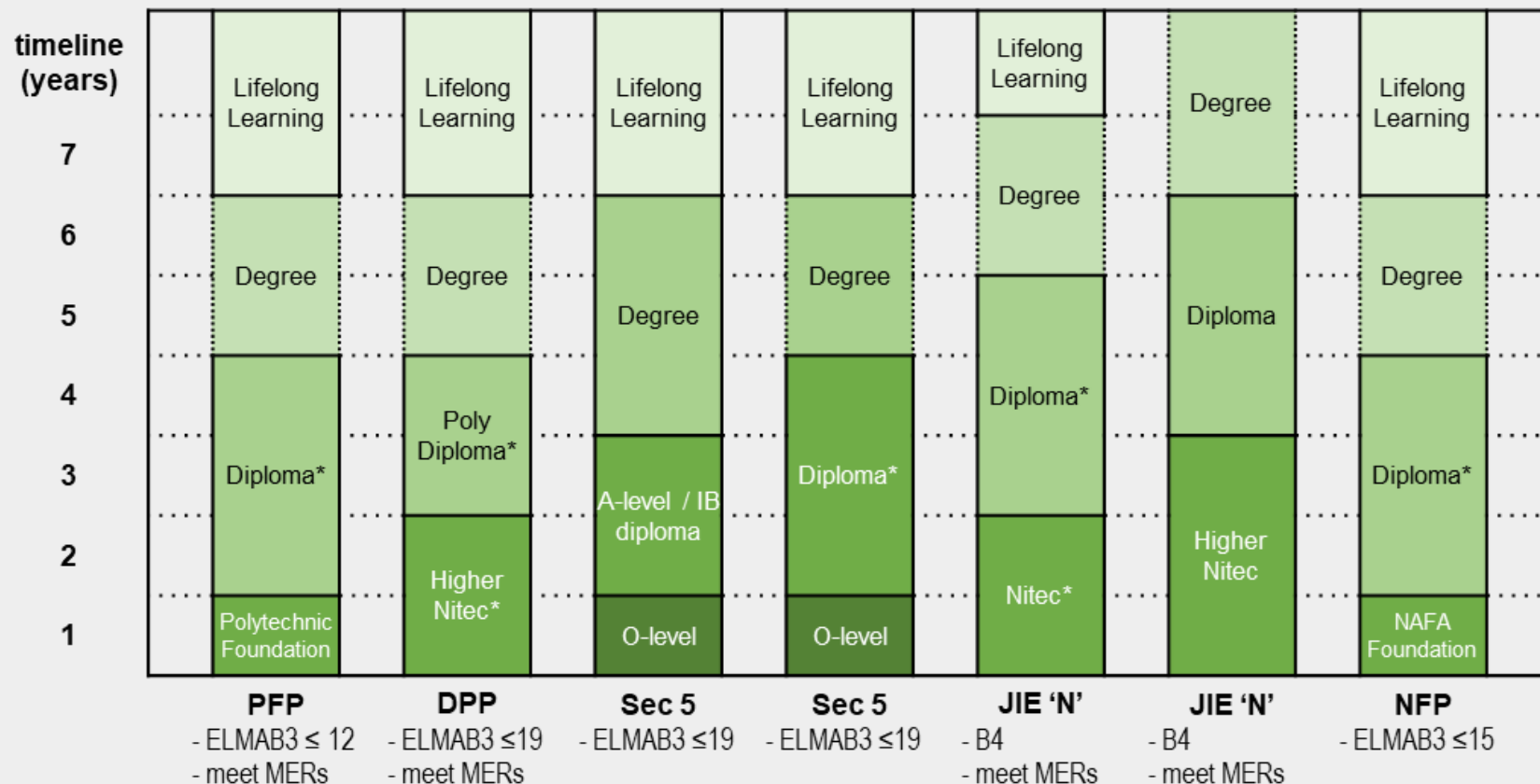
Subject	Min Grade
English	4
Math/A Math	4
3 other subjects	5

[Business/ Hospitality services]

Subject	Min Grade
English	3
Math/ A Math	4
3 Other subjects	5

- Refer to JIE booklet and ITE website (<https://www.ite.edu.sg/courses/full-time-courses/higher-nitec-for-dpp>) for more information.
- Eligible students would receive application form on N level result day. Students can pick up to 12 course options.

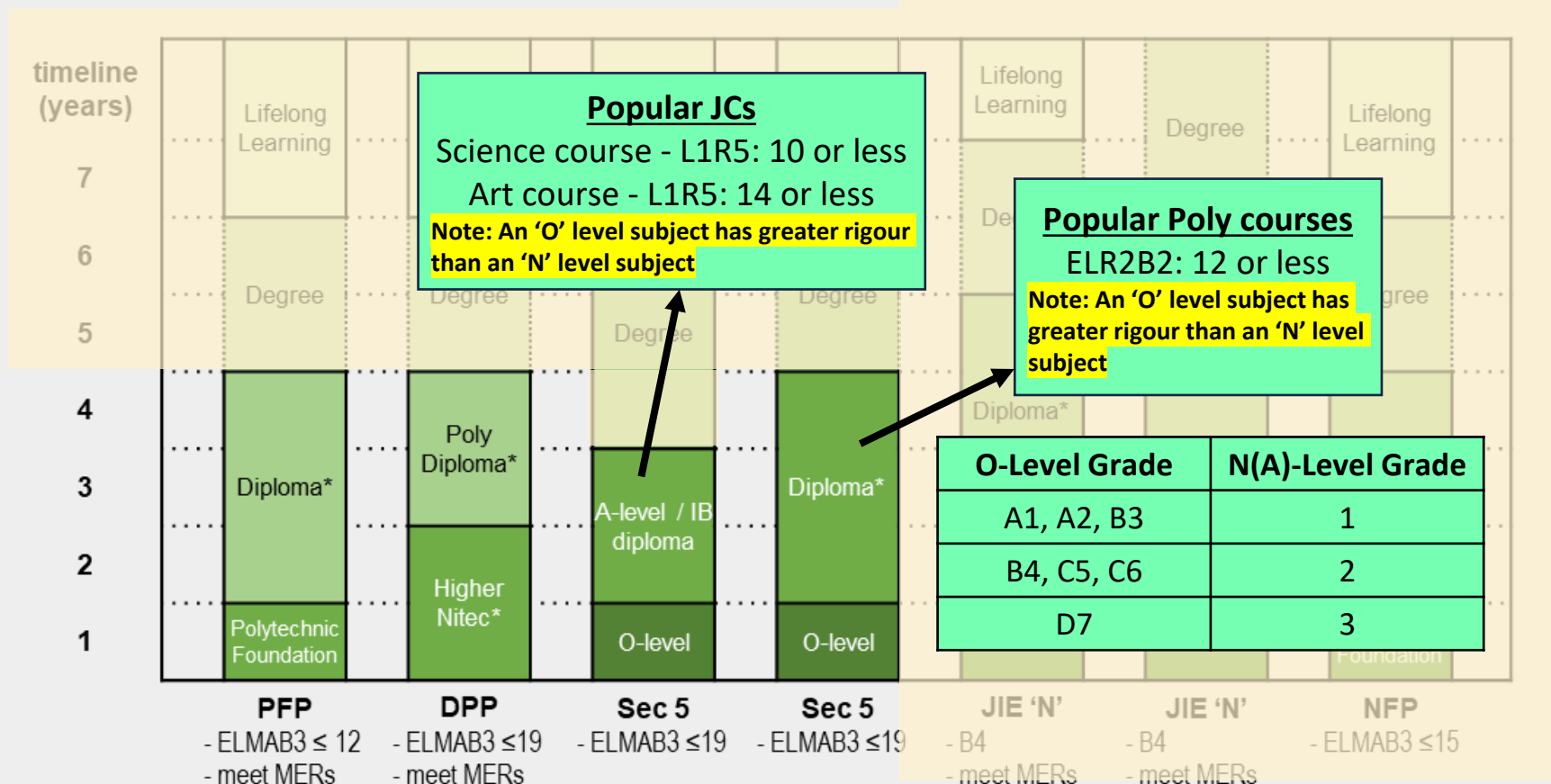
Post-Secondary Education Pathways for N-level students [N(A) course]



*progression is based on merit and good performance in selected courses

MER: course-specific Minimum Entry Requirements

Post-Secondary Education Pathways for N-level students [N(A) course]



*progression is based on merit and good performance in selected courses

MER: course-specific Minimum Entry Requirements

RESOURCES TO HELP YOU MAKE INFORMED DECISIONS



MySkillsFuture Student Portal

A one-stop portal that empowers you to embark on a journey of self-discovery and make informed education and career choices.

Use the information and tools to explore various education and career pathways and take charge of your future.

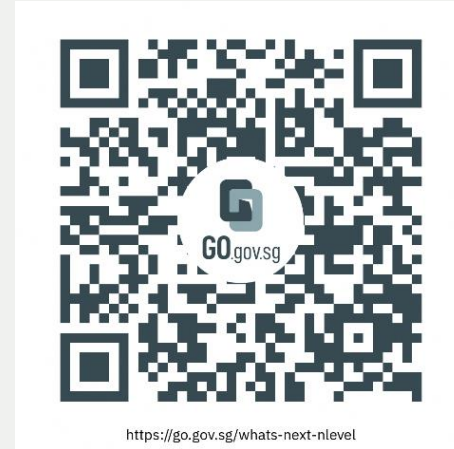
Where can we find more information?



<https://go.gov.sg/mySFsec>



RESOURCES TO HELP YOU MAKE INFORMED DECISIONS



<https://go.gov.sg/whats-next-nlevel>

RESOURCES TO HELP YOU MAKE INFORMED DECISIONS

Post-Secondary Education

Learn more about the
admissions exercises and
programmes



<https://moe.gov.sg/post-secondary/admissions>

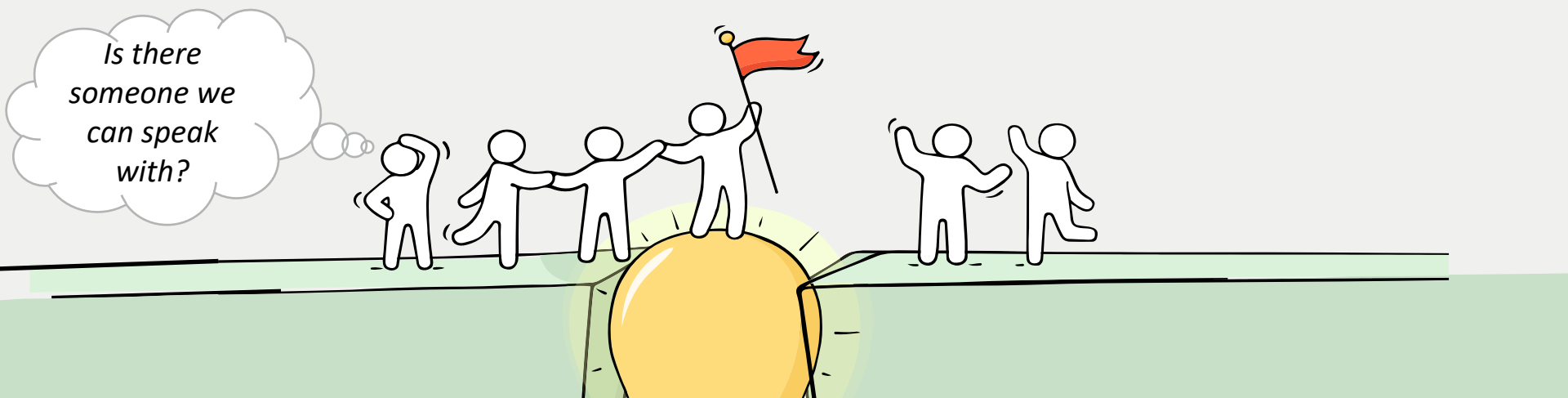
Learn more about the
post-secondary education
institutions



<https://moe.gov.sg/post-secondary/overview>

REACHING OUT FOR HELP IS A SIGN OF STRENGTH, NOT WEAKNESS.

If you have any questions about your options or are not coping well, do reach out to someone you trust and speak with them. It could be a parent/guardian, teacher, ECG Counsellor, School Counsellor or a friend that you can talk to.

An illustration showing a group of stick figures crossing a bridge. One figure is standing on a large yellow sphere in the middle of the bridge, holding a red flag. Other figures are on either side, some holding hands. A thought bubble from one figure contains the text "Is there someone we can speak with?".

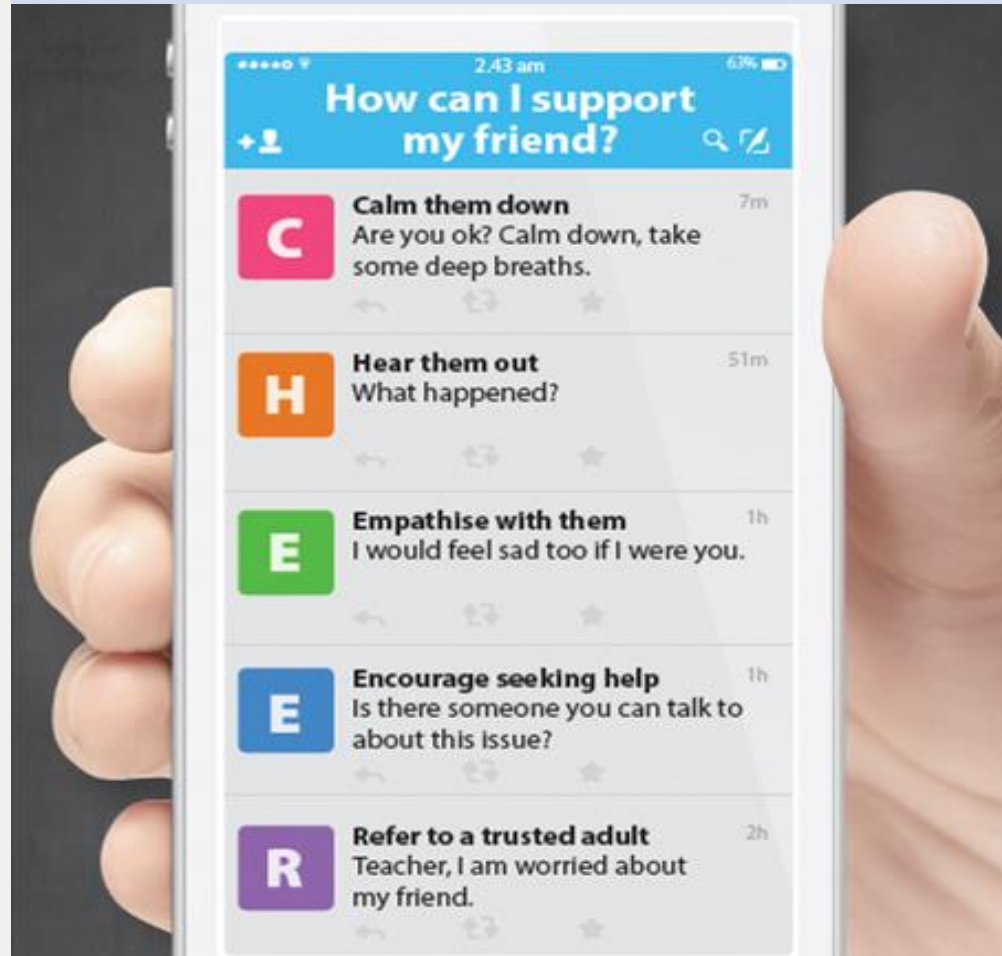
*Is there
someone we
can speak
with?*

SUPPORTING YOUR FRIEND

We may each experience different emotions upon receiving the results. You can share your friends' joy by congratulating them or give words of encouragement to friends who may be disappointed with their results.



Keep a lookout for your friends in distress. You can support them in the following ways:



There are other hotlines and chats available if you are more comfortable seeking help using these platforms. Scan the QR code below for a helpful resource.



SOS provides round-the-clock emotional support for those in distress, thinking of suicide or affected by suicide.

Call: **1767**
(24-hour helpline)

Whatsapp: **9151 1767**
(24-hour Care Text)

Community Health Assessment Team (CHAT) provides personalised and confidential mental health checks and consultation for youths. To speak with a youth support worker, you can:

Visit: **CHAT Hub at *SCAPE, #05-05**
Call: **6493 6500/ 6501**
Email: **CHAT@mentalhealth.sg**

mindline.sg is an online platform that provides tools, tips and resources to help you manage your health and well-being. Find out more at:
www.mindline.sg



TOUCHline is a helpline to provide youths with emotional support and practical advice.

Call: **1800-377 2252**
*Monday- Friday (Excluding Public Holidays):
9am – 6pm*

Carey is an online platform by Care Corner that provides free mental health check-ins with mental health professionals. Find out more at:
<https://carey.carecorner.org.sg/>

ec2 is an e-Counselling Centre where you can talk to a trained counsellor about the issues you are facing, right where you are.

Chat with a counsellor at:
www.ec2.sg
*Monday – Friday (Excluding Public Holidays):
10am – 12pm & 2pm – 5pm*



**The N-Level
examination is not
the destination.**

**It is part of your
education journey.**

Admissions Exercises

Things to note





Where am I now?

What can I apply for?

Where do I want to go?

N(T)-Level Student

ITE EAE

JIE 'N'/JIE 'E'

Institute of Technical Education (ITE) (Enhanced Foundation Programme, 2-year Nitec or 3-year Higher Nitec)

N(A)-Level Student

Eligible students may also progress to Secondary 5 to take the O-Level examinations. Applications can be made via your secondary school.

PFP

Polytechnic

ITE EAE

JIE 'N'

Institute of Technical Education (ITE) (2-year Nitec or 3-year Higher Nitec)

DPP

Institute of Technical Education (ITE) (2-year Higher Nitec)

NFP

Nanyang Academy of Fine Arts (NAFA)

EAE: Early Admissions Exercise
JIE: Joint Intake Exercise
PFP: Polytechnic Foundation Programme

DPP: Direct-Entry-Scheme to Polytechnic Programme
NFP: NAFA Foundation Programme



<https://www.moe.gov.sg/post-secondary/admissions>

For more information on applying to these courses, you can visit

<https://ite.edu.sg/admissions/traineeship>

For the list of 3-year Higher Nitec courses, please visit

<https://www.ite.edu.sg/courses/full-time-courses/nitec-and-3-year-higher-nitec>

Selected Nitec and Higher Nitec courses are available in traineeship mode.

Source: A Guide to Post-Secondary Admissions Exercises

Details of Admissions Exercises




JIE 'N'/JIE 'E' – Joint Intake Exercise

The JIE 'N' is for 2-year *Nitec* or 3-year *Higher Nitec* courses offered by ITE.

The JIE 'E' is for GCE N(T) students to apply for the 3-year *Nitec* course with Enhanced *Nitec* Foundation Programme.



go.gov.sg/applyjie

-  N(T)–Level Student
-  N(A)–Level Student

Details of Admissions Exercises

PFP – Polytechnic Foundation Programme

PFP is a one-year programme that offers a practice-oriented curriculum taught by polytechnic lecturers to better prepare polytechnic-bound Secondary 4 N(A) students for entry into selected polytechnic diploma courses. PFP students are given provisional places in diploma programmes, subject to them passing all modules in the one-year programme.



go.gov.sg/pfp

DPP – Direct-Entry-Scheme to Polytechnic Programme

DPP allows Secondary 4N(A) students to be admitted directly into selected 2-year *Higher Nitec* programmes at ITE without having to sit for the O-Level examinations or undergo a *Nitec* programme. DPP students who successfully complete their *Higher Nitec* courses at ITE and attain the required qualifying Grade Point Average (GPA) scores are guaranteed a place in a polytechnic diploma course mapped to their *Higher Nitec* course.





go.gov.sg/applydpp

NFP – NAFA Foundation Programme

NFP is a one-year practice-based programme that prepares N(A)-Level holders to pursue a diploma in the creative arts. NFP students who successfully complete the programme will be offered a place in their chosen diploma course at NAFA.



go.gov.sg/nafa-applynow

 **N(T)–Level Student**
 **N(A)–Level Student**

For Students Planning for Private Education



The 3Rs when deciding on Private Education

Reasons

- Why are you furthering your studies?
- Is this for better job prospects?

Readiness

- How ready are you to further your studies?
- Can you cope with the academic rigour and assignment deadlines?
- Can you fund your studies?

Risks

- Do you know the possible drawbacks?
- Your expected returns may not exceed the investments you put into your private education.
- Private schools may make exaggerated claims.
- Private schools may close due to various reasons.
- You may not get a full refund if you withdraw from your course.

<https://go.gov.sg/3rs>



8 Things You Should Know Before You Enrol in A Private School



School Registration

Ensure the school is registered with CPE. Review the school's registration period, expiry date and its overall registration track record.



Partner Institution

Research on the partner institution conferring the diploma or degree, and whether the qualification is recognised by the industry.

EduTrust Certification Scheme

Is the school EduTrust-certified*? Under the scheme, private schools are assessed for their performance in areas such as school management and provision of student support services.



**Schools are required to obtain EduTrust certification in order to offer external degree programmes*

School Premises

Head down to the campus ground to check the facilities and support services. Observe the study environment too.



Fee Protection



Ask if there is any course fee protection so that you will be able to recover unconsumed course fees should the school close down.



Beyond Course fees

Find out about the course syllabus and materials, graduation rates and employment prospects. Approach the alumni to find out what they think of the school.

Teachers

Check if the teachers are qualified to teach the course.



Internship

If industry attachment is included, find out which organisation you will be attached to, the period of attachment and the alternative arrangement should the attachment become unavailable. Verify the information with the organisation as well.



JOINT INTAKE EXERCISE

Applications Briefing

YOU WILL BE COLLECTING 5 DOCUMENTS TODAY

1. Results Slip
2. N level Certificate
3. JIE Form N
4. ITE Admission Booklet (for Full-Time and Traineeship Courses)
5. 'What's Next' Pamphlet

Applying to	How?	Timeline	What to Expect
ITE	Submit application online via the ITE application portal (https://www.ite.edu.sg/apply-for-ITE-courses)	2.30 pm, 18 Dec 2023 to 5.00 pm, 21 Dec 2023	Posting results released at 9.00 am on Fri, 29 Dec 2023 , via the ITE application portal Log on to the ITE application portal between 9.00 am on Fri, 29 Dec 2023 and 11.59 pm on Wed, 3 Jan 2024 to accept or reject the offer
DPP	Candidates eligible for the DPP will receive a copy of Form N from their secondary schools Submit application online via the ITE application portal	2.30 pm, 18 Dec 2023 to 5.00 pm, 21 Dec 2023	Posting results will be released at 2.00 pm on Fri, 22 Dec 2023 , via the ITE application portal. Log on to the ITE application portal between 2.00pm on Fri, 22 Dec 2023 and 11.59 pm on Wed, 27 Dec 2023 to accept or reject the DPP offer <u>School candidates who do not have a confirmed place in the DPP should report to their secondary school on 2 Jan 2024 for Secondary 5</u>
PFP	<u>Candidates interested in applying for the PFP should first report to school in 2024 to start their Secondary 5 year.</u> Applications for the PFP will open in January 2024, on day of O-Level results release. Candidates eligible for the PFP will receive a copy of Form P on the same day, inviting them to apply for the PFP		

RESOURCES

For more information on the DPP and the PFP, please visit these websites:

- Direct-Entry-Scheme to Polytechnic Programme (DPP)
(<https://www.ite.edu.sg/admissions/full-time-courses/higher-nitec-dpp>)
- Polytechnic Foundation Programme (PFP)
(<https://pfp.polytechnic.edu.sg/PFP/index.html>)