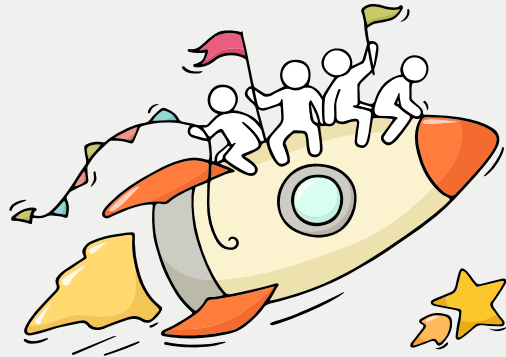


WELCOME BACK!



DEAR STUDENTS,

You have worked hard to reach this stage. Let's celebrate our efforts!



*Finally, we are
going to get our
results!*



Remember that while **everyone's educational journey is different,**
we can each have a fulfilling outcome!



RESOURCES TO SUPPORT YOU AS YOU RECEIVE YOUR RESULTS



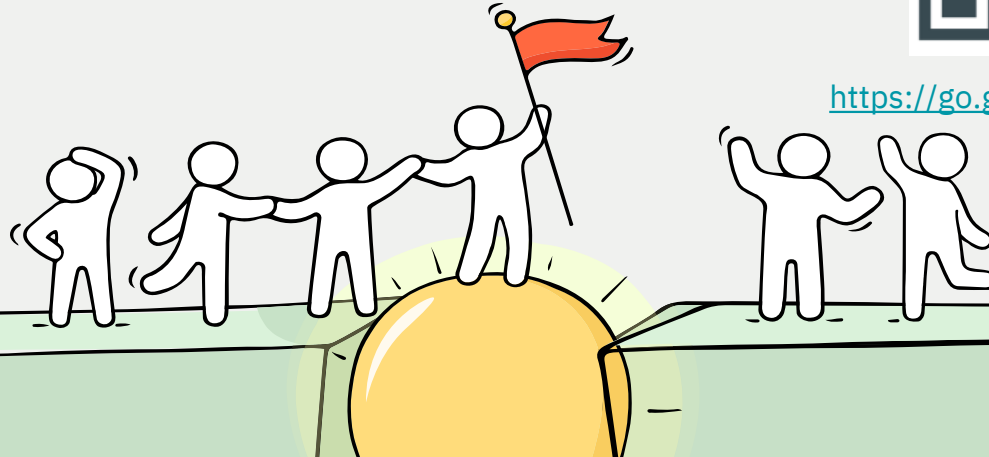
Realising the Star Within

Receiving your results and making decisions about your post-secondary pathways can be exciting to some, but stressful to others.

Scan this QR code for an infographic with some helpful resources to support you.



<https://go.gov.sg/olevelstudentresource>



RESOURCES TO SUPPORT YOU AS YOU RECEIVE YOUR RESULTS

Visit this Padlet wall for all resources related to JAE, JIE-O and PFP admissions.

Padlet

Bhavani devi thangamani • 4h
CVSS/EFSS Guide to 2026 O-Levels Results Release

01. Key Dates for 2026 JAE

02. 2026 JAE Courses for JC, Poly, ITE

03. Guide to apply JC/Poly/ITE courses under JAE (JAE-IS)

04. Appeal for Poly, ITE and JC

Bhavani devi thangamani 2 days ago

Application Timelines

JAE Key Dates

Bhavani devi thangamani 2 days ago

JC/MI, Poly and ITE (2-year Higher NITEC) courses offered under 2026 JAE

COURSES OFFERED IN 2026 JAE

Bhavani devi thangamani 2 days ago

Step-by-Step Guide to using JAE-IS system

JAE INTERNET SYSTEM (JAE-IS) USER GUIDE

Bhavani devi thangamani 2 days ago

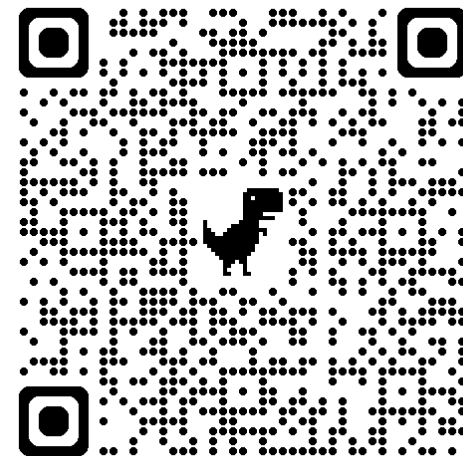
JAE Appeal Process

To appeal for a place in a JC/ MI:

- Approach the school of your choice directly

To appeal for a place in a polytechnic or the ITE (combined Poly/ITE JAE Appeal):

- Apply on the JAE online appeal portal from 3 Feb, Tues 9am to 6 Feb, Fri 4pm
- Submit up to 6 diploma and/or



<https://go.gov.sg/olevel>

**THINKING ABOUT YOUR NEXT STEP?
CONSIDER THESE QUESTIONS...**

Where Do I Want To Go?

Who Am I?

**How Do
I Get There?**



Education & Career Guidance

POST-SECONDARY EDUCATION PATHWAYS AFTER 'O' LEVEL

Admission Exercise	Institutions	Pathway	Eligibility Criteria
JAE	JC	2-year A Level or IB Diploma	Gross L1R5 \leq 20 + Grade Requirements
	MI	3-year A Level	Gross L1R4 \leq 20 + Grade Requirements
	Polytechnic	3-year Diploma	Net ELR2B2 \leq 26* + Min. Entry Requirements
	ITE	2-year <i>Higher Nitec</i>	Sat for at least 5 O Level subjects over a max. of 2 years + Min. Entry Requirements
JIE 'O'	ITE	3-year <i>Higher Nitec</i>	Sat for at least 5 O Level subjects + Min. Entry Requirements
Arts Insti. Admission Exercise	Nanyang Academy of Fine Arts (NAFA) LASALLE College of the Arts (LASALLE)	3-year Diploma	25 points in 4 GCE O Level subjects excluding English (Visit websites for other admission requirements)

*The exception is Diploma in Nursing, whereby the student's ELR2B2-C net aggregate score must not exceed 28.

SCHOOL FINDER – JC/MI

SchoolFinder

Explore JC/MI
schools



[www.moe.gov.sg/
schoolfinder](http://www.moe.gov.sg/schoolfinder)

Anderson Serangoon Junior College



Hougang
[1033 Upper Serangoon Road, S534768](#)

Course code: Arts : 39A | Science : 39S

2025 JAE L1R5 net aggregate: Arts: 7 - 11 | Science: 5 - 10

Net L1R5
Range for
previous year

Subjects offered

- Chinese Language Syllabus B
- Biology
- Chemistry
- Chinese Language
- Economics

Subjects

Poly Courses: Aggregate Score Types

ELR2B2-A



- Humanities
- Media & Design

ELR2B2-B



- Business & Management

ELR2B2-C



- Applied Sciences
- Built Environment
- Engineering
- Health Sciences
- Information & Digital Technologies

ELR2B2-D



- Built Environment
- Media & Design



Access this QR code to find out the relevant subjects that constitute R1 and R2 for the different aggregate score types.

COURSE FINDER – POLY / ITE

CourseFinder (Poly Courses)



[www.moe.gov.sg/
coursefinder](http://www.moe.gov.sg/coursefinder)

**Aggregate
Type**

AI & Data Engineering

Course code: C31

Admission Type: JAE, DAE, JPAE, Poly EAE, PFP

Nanyang Polytechnic

2025 JAE ELR2B2-C net aggregate: 6 - 13

Accountancy

Course code: N51

Admission Type: JAE, DAE, JPAE, Poly EAE, PFP

Tee Ann Polytechnic

2025 JAE ELR2B2-B net aggregate: 4 - 11

**Net ELR2B2 Range
for previous year**

HOW CAN I MAXIMISE MY 12 CHOICES IN THE JOINT ADMISSIONS EXERCISE (JAE)?



Passion Basket

First 3 – 4 Choices

Consider courses that **most align** with your Values, Interests, Personality & Skills (V.I.P.S) and strengths.



Practical Basket

Next 4 Choices

Choose courses you are **interested in** and stand a **good chance in securing**. (where your net score is **within** the range of the last year's aggregate score).



Prudence Basket

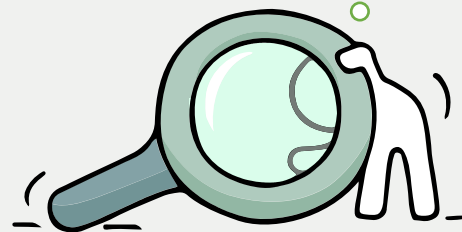
Last 4 Choices

Include alternative courses and institutions where the latest aggregate scores are **higher** than yours. With this, your chances of securing a place will be higher.

RESOURCES TO HELP YOU MAKE INFORMED DECISIONS



Where can we find more information?



<https://go.gov.sg/whats-next-olevel>

RESOURCES TO HELP YOU MAKE INFORMED DECISIONS

Information on Post-Secondary Education

Learn more about the
admissions exercises and
programmes



<https://moe.gov.sg/post-secondary/admissions>

Learn more about the
post-secondary education
institutions



<https://moe.gov.sg/post-secondary/overview>

CONCERNED ABOUT YOUR NEXT STEP?

Stop

- Calm yourself down. Take a few deep breaths.

Think

- Think through the different options that are available for you. Keep things in perspective.
- Remember that the O-Level is not the end point and is only one part of your life journey.

Do

- Have conversations with trusted adults who know you well to advise and guide you (parents, teachers, ECG counsellor).
- Decide and act based on your options.

When you receive your results, you may experience a range of emotions.

Managing these emotions well will allow you to stay calm and make more informed decisions.

REACHING OUT FOR SUPPORT IS A SIGN OF STRENGTH

If you have questions about your options or are need more support, you can reach out to your trusted adults such as a parent/guardian, teacher, school Counsellor or ECG Counsellor. You can also talk to a trusted friend.



Make an ECG counselling appointment via the ECG Centre @ MOE
<https://go.gov.sg/moe-ecg-centre>





Education and Career Guidance



01



Feeling uncertain or anxious about your future and career aspirations?

Difficulty in deciding your subject combination or post secondary pathway?



03

Let's Chat!

Every Monday and Wednesday

Email:

bhavani_devi_thangamani_A@schools.gov.sg

Booking link: <https://go.gov.sg/cvssecgchat>

Venue: ECGC Room, B1-14

02

Ms Bhavani is here to support



"Hi everyone, I'm Ms. Bhavani, your Education and Career Guidance Counsellor. My role is to help you explore your interests, discover your strengths, and navigate the exciting journey of choosing your future path. Whether you're dreaming big or unsure of what's next, I'm here to guide you with insights, resources, and support. Let's work together to turn your ambitions into a plan and your potential into success!"



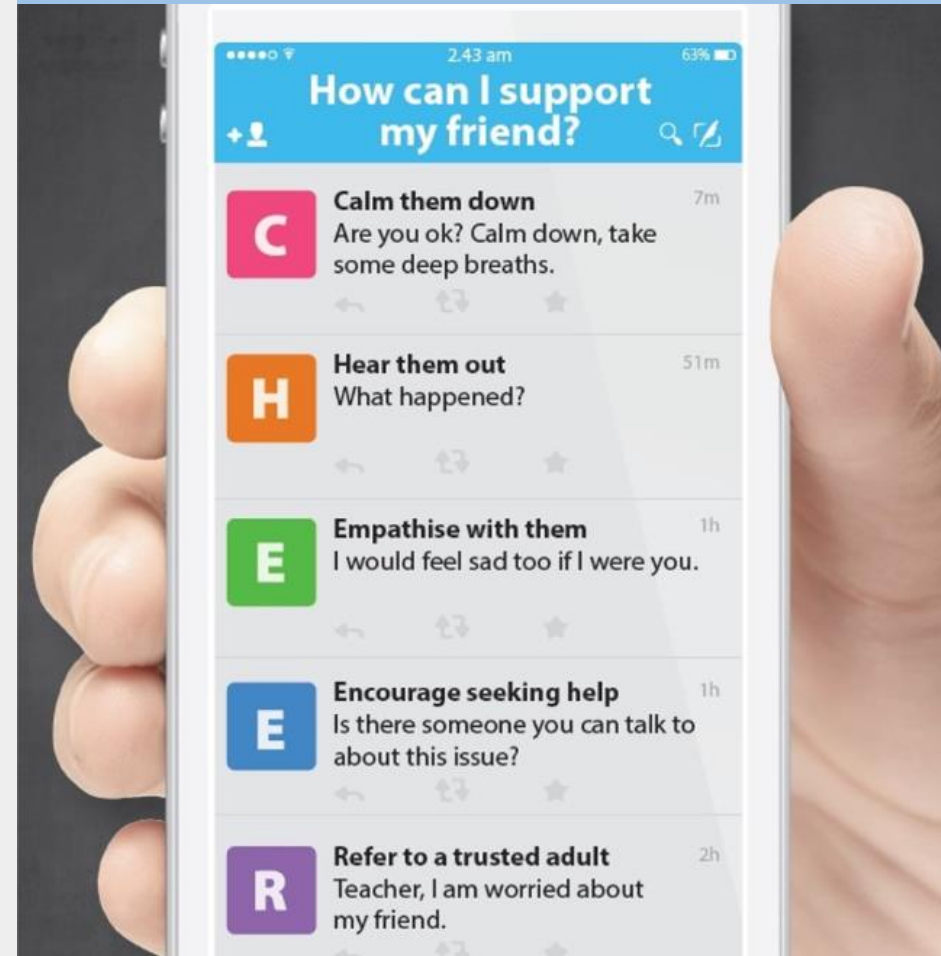
Scan the QR code to book your ECGC session.

Supporting Your Friend

- We may each experience different emotions upon receiving the results.
- You can share your friends' joy by congratulating them.
- If your friends appear to be disappointed with their results, encourage them.
- Alert a teacher if you are worried for them.



Keep a lookout for your friends in distress.
You can support them in the following ways:



Support is readily available for you.

There are other hotlines and chats available if you are more comfortable seeking help using these platforms.

SOS provides round-the-clock emotional support for those in distress, thinking of suicide or affected by suicide.

Call: **1767**
(24-hour helpline)

WhatsApp: **9151 1767**
(24-hour Care Text)

Community Health Assessment Team (CHAT) provides personalised and confidential mental health checks and consultation for youths. To speak with a youth support worker, you can:

Visit: **CHAT Hub at *Scape, 2 Orchard Link, #04-07**
Call: **6493 6500 / 6501**
Email: **chat@mentalhealth.sg**

Mindline is Singapore's national mental health helpline and textline service. The service is manned by trained counsellors who are ready to listen and support you.

Call: **1771**
(24-hour helpline)
WhatsApp: **6669 1771**
(24-Hour messaging service via WhatsApp)

Carey is an online platform by Care Corner that provides free mental health check-ins with mental health professionals. Find out more at: <https://carey.carecorner.org.sg/>

ec2 is an e-Counselling Centre where you can talk to a trained counsellor about the issues you are facing, right where you are.

Chat with a counsellor at: www.ec2.sg
Monday – Friday (Excluding Public Holidays): 10am – 12pm & 2pm – 5pm

TOUCHline is a helpline to provide youths with emotional support and practical advice.

Call: **1800 377 2252**
Monday- Friday (Excluding Public Holidays): 9am – 6pm





**The O-Level examination
is one milestone in your
education journey, and
there are many more
exciting pathways ahead.**

**Your future holds many
opportunities waiting to
be discovered!**

JOINT ADMISSION EXERCISE

YOU WILL BE COLLECTING 2 DOCUMENTS TODAY

1. Results Slip
2. GCE O-level Certificate

Note:

You will receive a digital copy of your **Form A** via your registered email address from 3.00pm today.

Students eligible for JAE may also download a copy of Form A from the JAE-Internet System (JAE-IS) during the application period.

Applying to	How?	Timeline	What to Expect
JC/MI/Poly/ITE	<p>Submit application online through the JAE website at www.moe.gov.sg/jae.</p> <p>The JAE-Internet System can be accessed using Singpass.</p>	4.00 pm, 14 Jan 2026 to 4.30 pm, 19 Jan 2026	<p>Posting results will be released on Tue, 3 Feb 2026, via (a) SMS to the Singapore mobile phone number provided during application (b) JAE-IS, accessible through the JAE website.</p> <p>Students posted to JCs and MI are to report to their posted institutions on Wed, 4 Feb 2026.</p> <p>Students posted to polytechnics or ITE will receive an email or package via mail on the enrolment details by end-February 2026.</p>
PFP (for 2025 4NA students)	<p>Submit application online through the PFP website at https://pfp.polytechnic.edu.sg/PFP/index.html.</p>	1.30 pm, 14 Jan 2026 to 4.30 pm, 19 Jan 2026	<p>Posting results will be released at 1.30pm on Mon, 26 Jan 2026 through the PFP website.</p> <p>Students to indicate whether to accept, reject, or appeal for a change of course by 4.00pm on Thu, 29 Jan 2026.</p>
DPP (for 2025 4NA students)	<p>Submit application online through the DPP portal at www.ite.edu.sg/apply-for-ite-courses.</p>	14 Jan 2026 to 19 Jan 2026	<p>Posting results will be released at 9.00 am on Wed, 21 Jan 2026 through the DPP application portal.</p> <p>Students to indicate whether to accept or reject the DPP offer by 11.59 pm on Mon, 26 Jan 2026.</p>

RESOURCES

Applicants can find more information on the following MOE websites:

- JAE website for more details on the JAE (www.moe.gov.sg/jae)
- SchoolFinder for details of the offerings by and previous entry score ranges for JCs and MI (www.moe.gov.sg/schoolfinder)
- CourseFinder for courses offered by the polytechnics and ITE, based on aggregate type and area of interest (www.moe.gov.sg/coursefinder)

