

# WELCOME BACK!

Briefing Slides for Release of 2024 GCE O-Level Results





CVSS 25TH ANNIVERSARY

RISING STARS  
REALISING FUTURES

CVSS 25TH ANNIVERSARY  
RISING STARS  
REALISING FUTURES





# WANT TO KEEP A PART OF CVSS WITH YOU?



# PURCHASE OF 25<sup>TH</sup> COMMEMORATIVE JACKET

**Step 1:** Sign up to register interest to purchase the jacket from **10<sup>th</sup> Jan to 24<sup>th</sup> Jan 2025**

**Link:** <https://for.edu.sg/cvss25jacket>

You will receive an update (via email) once the orders are confirmed.

**Step 2:** Come to the school bookshop to make payment for the jacket and confirm your size from **27 Jan to 14 Feb 2025**

**Step 3:** Collect your jacket by **14 March**.  
An email will be sent once the orders arrive.



*Once a North Star, always a North Star.*

Join us by registering via the link below:

[tinyurl.com/registercvssalumni/](https://tinyurl.com/registercvssalumni/)



**JOIN TODAY!**

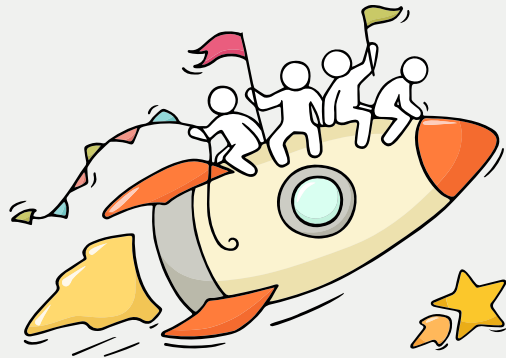


@CVSSALUMNI



**DEAR STUDENTS,**

You have worked hard to reach this stage. Let's celebrate our efforts!



*Finally, we are  
about to receive  
our results!*



Remember that while **everyone's educational journey is different, we can each have a fulfilling outcome!**





**THINKING ABOUT YOUR NEXT STEP?  
CONSIDER THESE QUESTIONS...**

**Where Do I Want To Go?**

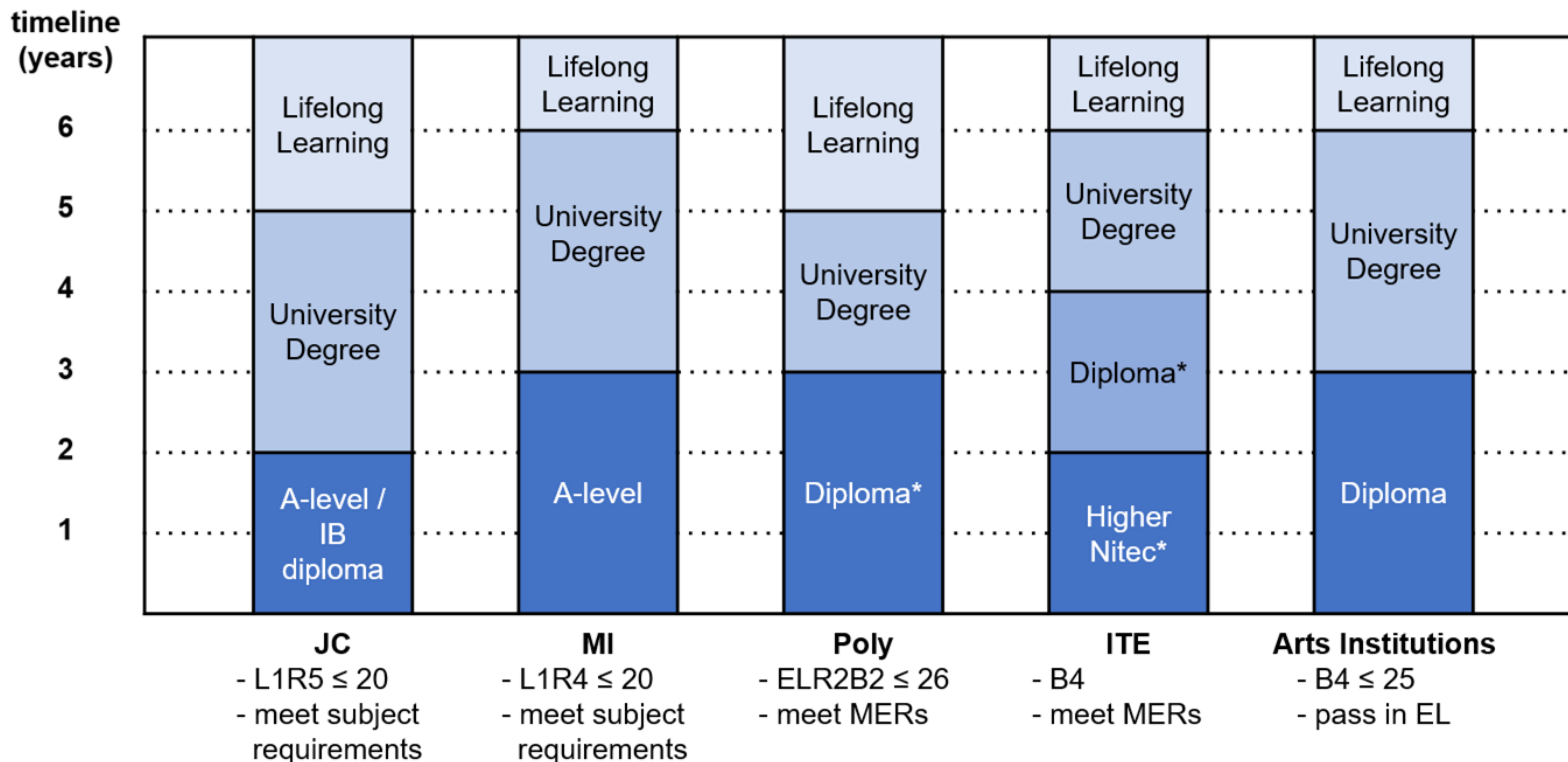
**Who Am I?**



**How Do  
I Get There?**

**Education & Career Guidance**

# POST-SECONDARY EDUCATION PATHWAYS AFTER 'O' LEVEL



\*progression is based on merit and good performance in selected courses

MER: course-specific Minimum Entry Requirements

# SOME TIPS FOR YOUR CONSIDERATION

## JC/MI

- Subject combination
  - Assumed knowledge
  - Pre-requisite
- Course cut-off
- Go for the open house
- Refer to Indicative Grade Profile for University admission

## POLY

- What the course is about
- What modules will you be studying
- Course cut-off & minimum entry requirements (MERs)
- What progression opportunities/career prospects there are

# NET L1R5 RANGES BY JC/IB STREAM (JAE 2024)

JC Name	A-Level				International Baccalaureate	
	Arts		Science		Course Code	L1R5 net Aggregate Range for Previous (2024) JAE
	Course Code	L1R5 Net Aggregate Range for Previous (2024) JAE	Course Code	Net L1R5 Range for Previous (2024) JAE		
Anderson Serangoon Junior College	39A	8 to 11	39S	3 to 10	-	-
Anglo-Chinese Junior College	22A	2 to 9	22S	2 to 8	-	-
Anglo-Chinese School (Independent)	-	-	-	-	51I	2 to 4
Catholic Junior College	23A	8 to 13	23S	7 to 12	-	-
Dunman High School	44A	2 to 8	44S	2 to 7	-	-
Eunoia Junior College	38A	3 to 7	38S	2 to 6	-	-
Hwa Chong Institution	24A	2 to 5	24S	2 to 4	-	-
Jurong Pioneer Junior College	40A	9 to 15	40S	5 to 14	-	-
Nanyang Junior College	26A	3 to 6	26S	2 to 5	-	-
National Junior College	27A	6 to 8	27S	2 to 7	-	-
Raffles Institution	28A	2 to 5	28S	2 to 4	-	-
River Valley High School	45A	7 to 9	45S	5 to 8	-	-
St. Andrew's Junior College	30A	5 to 10	30S	3 to 9	-	-
St. Joseph's Institution	-	-	-	-	52I	2 to 6
Tampines Meridian Junior College	41A	4 to 13	41S	6 to 12	-	-
Temasek Junior College	32A	6 to 8	32S	2 to 7	-	-
Victoria Junior College	33A	2 to 8	33S	2 to 6	-	-
Yishun Innova Junior College	42A	10 to 18	42S	6 to 20	-	-

Source: <https://www.moe.gov.sg/-/media/files/post-secondary/2025-jae/2025-jae-courses.pdf>



# CUT-OFF RANGES BY POLY COURSE CLUSTERS (JAE 2024)



	NP	NYP	RP	SP	TP
Applied Sciences	3-17	4-13	6-19	4-14	3-14
Business & Mgmt.	3-14	3-16	10-26	3-12	4-16
Engineering	3-24	4-26	12-26	4-20	4-20
Humanities	4-22	6-11	-	-	3-18
Info. & Digital Tech.	3-16	3-16	10-26	3-16	5-16
Media & Design	3-15	4-16	10-22	4-14	4-15

Source: <https://www.moe.gov.sg/-/media/files/post-secondary/2025-jae/2025-jae-courses.pdf>

# HOW CAN I MAXIMISE MY 12 CHOICES IN THE JOINT ADMISSIONS EXERCISE (JAE)?

**First 3 to 4 choices:** Consider courses that most align with your Values, Interests, Personality and Skills (V.I.P.S) and strengths.

**Next 3 to 4 choices:** Choose what you are interested in and stand a good chance of getting into. Consider the last aggregate scores of the courses (where your net score is within the range of the last year's aggregate score) in CourseFinder ([go.gov.sg/cf](https://go.gov.sg/cf)) or SchoolFinder ([go.gov.sg/sf-jcmi](https://go.gov.sg/sf-jcmi)).

**Last few choices:** Include alternative courses and institutions where the last aggregate scores are higher than yours. With this, your chances of securing a place will be higher.

Consider all choices carefully and **fill in all 12 choices** even if you are confident of getting into your desired course.

# HOW CAN I MAXIMISE MY 12 CHOICES IN THE JOINT ADMISSIONS EXERCISE (JAE)?

## Student X

- Interested in Science
- Keen to pursue a career in Biomedical Sciences
- Aims for JC pathway
- CCA attainment: Excellent (i.e. 2 bonus points)
- Form A

L1R5	ELR2B2-A	ELR2B2-B	ELR2B2-C	ELR2B2-D
11	10	8	8	8

**First 3 to 4 choices:** Consider the courses that most align with your Values, Interests, Personality & Skills (V.I.P.S) and strengths.

Course choice/code	net indicative grade (MOE course finder)
EJC Sci/38S	2 - 6
NJC Sci/27S	2 - 7
River valley High Sci/45S	4 - 8

**Next 3 to 4 choices:** Choose what you are interested in and stand a good chance

Course choice/code	net indicative grade (MOE course finder)
SAJC Sci/30S	3 - 9
CJC Sci/23S	3 - 13
Biomedical science SP/S98	3 - 7

**Last few choices:** Include alternative courses and institutions where the last aggregate scores are higher than yours.

Course choice/code	net indicative grade (MOE course finder)
Biomedical science RP/R14	7 - 12
YIJC Sci/42S	6 - 20

# HOW POSTING WORKS?

To apply for a course, you must first **meet the admission criteria** of the course.

After eligibility is confirmed, these factors will be considered.

- Your net aggregate score, that is gross aggregate score minus bonus points.
- Your choice of courses.
- Vacancies available in the courses.



# RESOURCES TO HELP YOU MAKE INFORMED DECISIONS



*Where can we find more information?*



<https://go.gov.sg/whats-next-olevel>

# RESOURCES TO HELP YOU MAKE INFORMED DECISIONS

## Information on Post-Secondary Education

Learn more about the admissions exercises and programmes



<https://moe.gov.sg/post-secondary/admissions>

Learn more about the post-secondary education institutions



<https://moe.gov.sg/post-secondary/overview>

# CONCERNED ABOUT YOUR NEXT STEP?

## Stop

- Calm yourself down. Take a few deep breaths.

## Think

- Think through the different options that are available for you. Keep things in perspective.
- Remember that the O-Level is not the end point and is only one part of your life journey.

## Do

- Have conversations with trusted adults who know you well to advise and guide you (parents, teachers, ECG counsellor).
- Decide and act based on your options.

When you receive your results, you may experience a range of emotions.

Managing these emotions well will allow you to stay calm and make rational decisions.

# REACHING OUT FOR SUPPORT IS A SIGN OF STRENGTH

If you have questions about your options or are not coping well, you can reach out to trusted adults such as a parent/guardian, teacher, school Counsellor or ECG Counsellor. You can also talk to a trusted friend.



Make an ECG counselling appointment via the ECG Centre @ MOE  
<https://go.gov.sg/moe-ecg-centre>





# Supporting Your Friend

We may each experience different emotions upon receiving the results. You can share your friends' joy by congratulating them or give words of encouragement to friends who may be disappointed with their results.



Keep a lookout for your friends in distress. You can support them in the following ways:





**The O-Level examination  
is not the destination.**

**It is part of your  
education journey.**



Realising the Star Within

# JOINT ADMISSION EXERCISE

Applications Briefing

# YOU WILL BE COLLECTING 3 DOCUMENTS TODAY

1. Results Slip
2. O level Certificate
3. What's Next Pamphlet

## Note:

You will receive a digital copy of your **Form A** via your registered email address from 3.00pm today.

Students eligible for JAE may also download a copy of Form A from the JAE-Internet System (JAE-IS) during the application period.

Applying to	How?	Timeline	What to Expect
JC/MI/Poly/ITE	<p>Submit application online through the JAE website at <a href="http://www.moe.gov.sg/jae">www.moe.gov.sg/jae</a>.</p> <p>The JAE-Internet System can be accessed using Singpass.</p>	<p><b>4.00 pm, 10 Jan 2025 to 4.00 pm, 15 Jan 2025</b></p>	<p>Posting results will be released on <b>Tue, 4 Feb 2025</b>, via (a) SMS to the Singapore mobile phone number provided during application (b) JAE-IS, accessible through the JAE website.</p> <p>Students posted to JCs and MI are to report to their posted institutions on <b>Wed, 5 Feb 2025</b>.</p> <p>Students posted to polytechnics or ITE will receive an email or package via mail on the enrolment details by <b>end-February 2025</b>.</p>
PFP (for 2024 4NA students)	<p>Submit application online through the PFP website at <a href="https://pfp.polytechnic.edu.sg/PFP/index.html">https://pfp.polytechnic.edu.sg/PFP/index.html</a>.</p>	<p><b>1.30 pm, 10 Jan 2025 to 4.00 pm, 15 Jan 2025</b></p>	<p>Posting results will be released at <b>1.30pm on Wed, 22 Jan 2025</b> through the PFP website.</p> <p>Students to indicate whether to accept, reject, or appeal for a change of course by <b>4.00pm on Mon, 27 Jan 2025</b>.</p>
DPP (for 2024 4NA students)	<p>Submit application online through the DPP portal at <a href="http://www.ite.edu.sg/apply-for-ite-courses">www.ite.edu.sg/apply-for-ite-courses</a>.</p>	<p><b>12.00 am, 10 Jan 2025 to 11.59 pm, 14 Jan 2025</b></p>	<p>Posting results will be released at <b>9.00 am on Wed, 17 Jan 2025</b> through the DPP application portal.</p> <p>Students to indicate whether to accept or reject the DPP offer by <b>11.59 pm on Tue, 21 Jan 2025</b>.</p>

## RESOURCES

Applicants can find more information on the following MOE websites:

- JAE website for more details on the JAE ([www.moe.gov.sg/jae](http://www.moe.gov.sg/jae))
- SchoolFinder for details of the offerings by and previous entry score ranges for JCs and MI ([www.moe.gov.sg/schoolfinder](http://www.moe.gov.sg/schoolfinder))
- CourseFinder for courses offered by the polytechnics and ITE, based on aggregate type and area of interest ([www.moe.gov.sg/coursefinder](http://www.moe.gov.sg/coursefinder))

A scenic landscape of misty mountains at sunrise. The sun is low on the horizon, casting a warm, golden glow over the scene. The mountains are shrouded in a light mist, and several pine trees are visible in the foreground, some with vibrant green foliage. The overall atmosphere is serene and inspiring.

***ADVENTURES OF A LIFETIME!  
TURN ON YOUR MAGIC!  
YOU ARE ALL DIAMONDS TAKING SHAPE .....  
PURSUE YOUR PASSION .... NOW!***